

PROGRESSES



**SOMERSET COUNTY
CHAMBER OF COMMERCE**

Networking Businesses to Enhance Economic Opportunities



LEARN HOW TO GIVE YOUR BUSINESS A BOOST

See Page 2

**APRIL
2017**

Chamber will reward three *Scholarship application deadline April 7*

The Somerset County Chamber of Commerce is offering three \$500 awards to area students. Applicants must be a member of the Chamber or a student of a Chamber-member school, university or college; an employee of a Chamber member; a child of a Chamber member; or the child of an employee of a Chamber member.

Some other restrictions apply. See application for details.

Applicants must also be planning to attend one of these Chamber-member institutions:

- Allegany College of Maryland
- Geneva College Dept. of Professional and Online Graduate Studies
- Greater Johnstown Career & Technology Center
- International College of Bible Theology
- Mount Aloysius College
- Penn State – Fayette
- Pennsylvania Highlands Community College
- Saint Francis University
- Somerset County Technology Center
- University of Pittsburgh at Johnstown.

To enter, applicants must submit a



typed, one-page essay describing how winning the scholarship will help in achieving his or her educational goals. Candidates must also verify they have completed at least 20 hours of volunteer work between May 1, 2016, and April 7, 2017. See the scholarship application for additional criteria and rules.

Applications may be obtained at the Chamber office at 601 N. Center Ave., Somerset, or downloaded from the Chamber website, www.somersetcountychamber.com. Applications are also available from school guidance counselors.

The deadline to register is April 7. Applicants who fail to meet the necessary criteria or who do not follow the instructions on the application will be disqualified. Winners will be notified on or before April 28.

For more information, contact the Chamber at (814) 445-6431 or info@somersetcountychamber.com.

Find additional information on scholarships, training opportunities and more on the Success in Somerset County page on the Chamber's website, www.somersetcountychamber.com/SomersetCounty/WorkforceEducation.aspx.

New Chamber directory available

The Chamber's 2017-2018 *Community Profile & Membership Directory* will be available in early April. Approximately 15,000 copies were printed and more than 10,000 Somerset County subscribers of the *Daily American* will receive copies in their newspapers on April 10.

If your business or organization would like additional copies of the new directory, please contact the Chamber.



SAVE THE DATE

OPEN FORE BUSINESS Golf Tournament

Thursday, June 22
Somerset Country Club

For more information,
call (814) 445-6431.

Discover available resources

Forum will highlight opportunities for area businesses

Looking for training monies or maybe researching how you can add additional equipment to your business? There are funding and training resources available for companies in and around Somerset County through some of our partners in the Southern Alleghenies region. The problem sometimes is finding the resources that offer these business benefits.

The Somerset County Chamber of Commerce is bringing our resource partners together under one roof April 12 at the Somerset Country Club to highlight and explain the multitudes of benefits



available to our local businesses. At this forum, hear from industry experts on how your business can take advantage of many of these benefits and help your company grow. Areas include training, employment, on-the-job training, hiring disabled workers and more.

Registration and a breakfast buffet will begin at 7:30 a.m. followed by the presentation at 8 a.m. There is a cost to attend and pre-registration is required by April 7.

For more information, see the enclosed registration form or contact the Chamber at (814) 445-6431 or info@somersetcountychamber.com.

Energy solutions for Chamber members

The Somerset County Chamber of Commerce is dedicated to providing value-added benefits to our members. Some of these benefits may offer outstanding cost savings to you and in this case, that's exactly what we are offering through OnDemand Energy Solutions.

OnDemand Energy Solutions is the endorsed energy consultant for the Somerset County Chamber of Commerce and has worked to educate our members in a consultative fashion

on electric deregulation (choice) while simultaneously providing our members with exclusive offers by leveraging OnDemand's supplier relationships (27 in total) to co-create products and develop cutting-edge solutions for our members.

Since its inception in 1985, OnDemand Energy Solutions has emerged as one of the largest and more experienced full-service consulting firms in the energy marketplace. As a trusted adviser to more than 8,000 business clients, with over 5 billion kWh contracted and \$4 billion in managed energy spend, OnDemand has always believed the customer comes first.

Through managing the ChamberChoice Energy Program, OnDemand Energy Solutions has never been stronger and your

array of choices has never been broader. In the early 2000s, the only viable option for most chamber members was the pool program. Today there are many more products available to our members (fixed, variable, pool, etc.). OnDemand's advisers will assess and analyze the most prudent and optimal procurement strategy for your individual business and will work on behalf of each individual member's unique business needs.

OnDemand provides electricity, natural gas and environmental products to large scale, energy intensive, commercial and industrial consumers as well as medium to small-scale commercial users. OnDemand also helps friends and family of its business customers by working with its energy supply partners to craft preferred residential offers for its members.

OnDemand Energy Solutions is the only energy consultant endorsed through the Somerset County Chamber of Commerce and represents the ChamberChoice Energy Program and 88 chambers statewide.

For more information on OnDemand Energy Solutions or to speak to a representative, visit ondemand.com, call 888-566-3362 or email solutions@ondemandenergy.com.



New Chamber Member

McKelvey Masonry

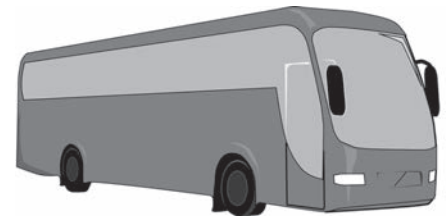
Jennifer McKelvey, owner

770 Listie Road, Friedens, PA 15541

(814) 445-1846

jjmckelvey@verizon.net

McKelvey Masonry is a full-service masonry company doing both small and large projects. Specialties include decorative and flat concrete as well as brick, block, stone, repair work, tile and more. McKelvey Masonry also manufactures concrete countertops, outdoor barbecues and kitchen areas. The company does stamp dyed, acid stained and other forms of decorative concrete.



Upcoming bus trips

All tours leave from Summit Plaza, North Center Avenue, Somerset. Call (814) 233-0119 for details and pricing.

Brown Bag Tour

Sugarcreek, Ohio

May 9

Fill your bag with goodies and enjoy a meal at an Amish home. Cost includes transportation, goodies and the meal.

Pigeon Forge, Tenn.

June 15-8

This four-day, three-night tour includes three breakfasts, one lunch, three dinners, eight performances, transportation and lodging.

American Music Theater Christmas Show

Lancaster

Nov. 2

Cost includes transportation, the performance and a meal.

Christmas Gift & Craft Show

Harrisburg

Dec. 2

Cost includes transportation and admission to the show.

Casino Trips

Call for information.

Member News

SCEDC names director: In March, the Somerset County Economic Development Council named Somerset native Josh Miller as its new executive director. Miller replaces Gary DuFour, who left the organization last fall.

Organization receives donations: In Touch Hospice received a \$9,456.20 donation from the Somerset Hospital Auxiliary and a \$4,500 donation from the Fraternal Order of Eagles Aerie #1801.

F.O.E. donations: The Fraternal Order of Eagles Aerie #1801 recently made \$2,000 donations to the Somerset Oncology Center and the Somerset VFW Honor Guard and \$1,000 donations to the Boys & Girls Club of Somerset County and the Robert Hanson Diabetes Fund.

Gil named: John Gil, Somerset Trust Co. chief operating and risk officer, was recently named a member of the national FinXTech Advisory Group.

Bank makes EITC donations: Citizens Neighborhood Bank made several donations to area organizations through the Educational Improvement Tax Credit Program and the Opportunity Scholarship Tax Credit. Junior Achievement of Western Pennsylvania received \$10,000 while the Somerset County Foundation for Allegheny College of Maryland, Berlin Brothersvalley School District, Meyersdale Area School District and Somerset Area School District each received \$4,000.

Hospital welcomes Faber: Dr. David C. Faber has joined Conemaugh Meyersdale Medical Center as the new physician overseer of the Meyersdale Wound Healing Center.

Eyer recognized: Robert Eyer, president of Wessel & Company, Johnstown, received the Laurel Highlands Boy Scout Council's Distinguished Citizen Award during the 47th annual Harry E. Mangle Memorial Dinner in February.

School expands program: The Greater Johnstown Career and Technology Center announced in March it will expand its "Career in a Year" program to include a full-time adult

cosmetology program. The change comes in response to Pennsylvania Academy of Cosmetology's decision to close. GJCTC will offer nearly \$100,000 in scholarships to cosmetology students transferring to the technology center.

Rotary beneficiaries: Somerset Rotary Club donated \$1,000 each to the Children's Aid Home of Somerset County, Somerset Area Food Pantry, Somerset County Meals on Wheels, Somerset County Drug-Free Communities, Somerset Vol. Fire Dept. and the Humane Society of Somerset County. The money was raised through the club's annual Rotary Radio Day in January. Somerset Rotary Club also donated \$500 to the PIT Center, Somerset, to replace the facility's score board.

Bundy joins LHVB: The Laurel Highlands Visitors Bureau recently welcomed Jared Bundy as its new director of interactive marketing. Bundy replaces Michele Wisnesck, who left the organization in January.

Realtors recognized: Berkshire Hathaway HomeServices' Erin Mikolich has been named a Chairman's Circle Gold recipient for a fourth consecutive year. This honor represents the top 2 percent nationwide of Berkshire Hathaway HomeServices. Robert "Wags" Wagner was named a President's Circle recipient for a second straight year. The honor represents the top 4 percent nationwide of Berkshire Hathaway HomeServices.

Office adds staff: Dr. Richard C. Irwin has joined the Ophthalmic Associates staff in Somerset. Irwin, who closed his own Somerset office Feb. 1, has more than 30 years' experience serving residents of Somerset and Westmoreland counties. He will continue to see patients at Ophthalmic Associates' Somerset office as well as his Jones Mill location. Barb Raley, Irwin's receptionist, and optician Renee Riley have also joined the Ophthalmic Associates staff.

Vikings make donation: Students at Shanksville-Stonycreek School District

recently raised \$1,560 for the Leukemia and Lymphoma Society Light the Night Walk.

Anti-drug campaign: Forever Media and the Cambria County Drug Coalition have launched Hearts Against Heroin, a campaign focusing on public awareness, education and fund raising to help put an end to drug abuse and addiction in Cambria and Somerset counties as well as west-central Pennsylvania. Corporate partners include 1st Summit Bank, Conemaugh Health System, Martin Baker America, Somerset Hospital, Spangler Subaru and Yeager's Heating Service. Additional information can be found online at www.foreverjohnstown.com/hearts-against-heroin.

Students make donation: Students at Somerset Christian School collected more than 130 items for the Somerset County Food Bank through a food drive in January.

Members make list: Several Chamber members were named to *Pennsylvania Business Central's* 2016 Top 100 Organizations list. They were: 1st Summit Bank, Ameriserv, Chan Soon-Shiong Medical Center, First Commonwealth, First National Bank, Geochemical Testing, The Learning Lamp, Meyersdale Area Merchants Association, Mount Aloysius College, Southern Alleghenies Planning & Development Commission, St. Francis University, University of Pittsburgh at Johnstown and USSCO Federal Credit Union.

Offer for members: Through a partnership with ChamberChoice, Chamber members and their employees can receive 50 percent off retail price on all cellhelmet products. To access your discount, simply enter your local chamber name (including the word 'Chamber') in the discount field at checkout and your discount will be applied. If you have any questions regarding cellhelmet products or problems with the discount field, contact Russ York at cellhelmet at (724) 244-4716 or russ.york@cellhelmet.com.

Study details school's regional economic impact

By Gil Hazelwood

Newswriter, Allegany College of Maryland
Dept. of Advancement and Community Relations

A recently released economic analysis shows that Allegany College of Maryland provides enormous economic value to its multi-county service area and the students it educates.

ACM students enjoy a 15.4 percent rate of return on their educational investment, recovering their costs, including wages foregone while enrolled, in less than nine years.

The average student's future income increases by \$3.50 for every dollar invested.

ACM's benefits to society as a whole were also calculated based on higher earnings of 2015-16 students in their working lifetime along with associated increases in business output and savings in social costs.

Society's investment of \$71.1 million in the analysis year, including student expenditures and student opportunity costs, generated \$307.4 million in total benefits to society, the study found. Every dollar invested yields \$4.30 in benefits to society.

ACM's economic value was assessed in a statewide report commissioned by the Maryland Association of Community Colleges. Conducted by Economic Modeling Specialists International, it covers the fiscal year ending June 30, 2016.

EMSI used labor market data to draw connections between economics and people to analyze the impact of ACM on the local economy and its return on investment by students and the community.

The study concluded that Cumberland-based ACM contributes nearly \$24 million in employee earnings and benefits each year and generates nearly \$98 million in total economic impact.

"ACM creates value in many ways," the report stated. "The college plays a key role in helping students increase their employability and achieve their individual potential.

"It provides students with the skills they need to have a fulfilling and prosperous career," it added. "Further, it supplies an environment for students to meet new people, increase their self-

confidence and promote their overall health and well-being."

Taxpayers derive great benefit from ACM as well. State and local governments recoup more than they contribute through higher tax collections from alumni who earn more than they would without a college education.

State and local funding of \$16.6 million in the study year generated \$27.3 million in total benefits through added taxes collected and public-sector savings derived through improved lifestyles.

This means that for every \$1 of public money invested \$1.60 was returned to taxpayers over students' working lives for an average annual return of 4.8 percent.

The EMSI study determined that the college's day-to-day operations added \$26 million to the region in 2015-16, the equivalent of supporting 601 jobs.

ACM students, both drawn to and retained in the area because of the college, added \$3.8 million to the regional economy. The sum they spent was the equivalent of supporting 89 jobs.

But the college's greatest economic impact stems from the education and training it provides to area students. New workplace skills by ACM's thousands of alumni added \$67.6 million in income that year, or the equivalent of 1,229 supported jobs.

EMSI credits ACM with \$97.4 million of total income supported in the regional economy through spending by the college and its students and by the impact of its alumni. This economic energy supports 1,918 jobs in the region.

EMSI's economic-value analysis of ACM and other Maryland community colleges used the firm's multi-regional social accounting matrix model.

ACM served 3,706 credit and 6,882 continuing education students in the year that EMSI, a CareerBuilder firm, conducted the study. Eleven percent of these 3,706 students were drawn to the area because of the college, and 68 percent of the total remained after their studies ended.

ACM employed 563 area residents to educate its students that fiscal year and maintained a total payroll, including benefits, of \$23.8 million.



Chamber focused on next generation

In 2013, the Somerset County Chamber of Commerce received funding through the Community Foundation for the Alleghenies to launch Success in Somerset County, an education initiative designed to create awareness of career, job and educational opportunities in Somerset County.

Now in its fourth year, Success in Somerset County has been effectively implemented in seven high schools with plans to impact additional schools and students in the future. Programming includes career panels, industry tours and specialized programs focusing on "education beyond the classroom" to prepare students for life after high school with an emphasis on high-demand jobs and industries in our region.

Through all of the Success in Somerset County programs, it is crucial to demonstrate effective and proactive measures to benefit the career prospects for those who call Somerset County home. With a shortage of skilled workers in this region, it is imperative employers reach out to and connect with young people in hopes of filling vacant positions, both now and



the future, to remind them a career is possible without leaving Somerset County.

Last spring, the Chamber launched a dedicated workforce education webpage, www.somersetcountychamber.com/SomersetCounty/WorkforceEducation.aspx, to better connect the local business community with area students and educators.

This page, accessible 24/7 on the Chamber's website, serves as a one-stop-shop for details on scholarships, programs, events, training sessions and other useful information. Each month, an e-newsletter is distributed to area school districts for distribution to students, parents, faculty and administrators.

For more information on this project, including on how you can submit workforce education-related news items and events, advertise your business or organization or be added to the email list, contact Sheena Baker at (814) 445-6431.

Birthright Mother's Day Carnation Sale

Celebrate the moms in your life this Mother's Day with a gift of carnations from Birthright. All proceeds will stay in Somerset County to help pregnant mothers in need receive the care and guidance their babies deserve. Carnations will be available for delivery or pickup May 12 and May 13. Contact the Somerset Birthright office at (814) 445-9300 to place an order.

Diamond Dazzle winner



Ace in the hole: Longtime Chamber volunteer Hazel Hillegas was the lucky winner of the Chamber's Diamond Dazzle mixer drawing at the Feb. 16 Uptown Painting Party Mixer. In addition to her cash prize, the Chamber made a donation to the Berlin Brethren Church's Deacon Fund in Hillegas' name.

Do you enjoy reading this newsletter?

Final deadline for Chamber dues approaching

Don't let your Chamber membership lapse and risk losing out on all the benefits of membership. This is a reminder that the April 28 deadline for dues payment is quickly approaching.

If a present cash flow issue is delaying your payment, we can offer a very flexible payment plan as an option. Just let us know what we can do to help.

Don't miss out on all the benefits included with membership, including

a variety of networking opportunities, marketing and advertising avenues, business referrals, savings on your energy bill and more. Remember that an investment in the Chamber is an investment in your business and the community.

Contact the Chamber at (814) 445-6431 if you have any questions regarding your membership.



Upcoming Chamber Mixers

Contact the Chamber at (814) 445-6431 or info@somersetcounty-chamber.com to RSVP.

LAUREL VIEW VILLAGE

Laurel View Village Mixer

In conjunction with the Greater Johnstown/Cambria County Chamber of Commerce

Thursday, April 27 5-7 p.m.

Fresh Harvest (formerly Oakwood Restaurant)

2000 Cambridge Drive, Davidsville



Whitehorse Brewing LLC Mixer

Thursday, May 18 5-7 p.m.

Whitehorse Brewing LLC

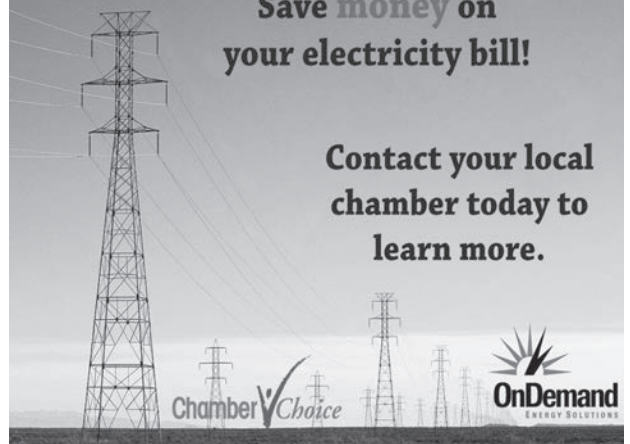
824 Diamond St., Berlin

PLEASE NOTE: Mixers may be cancelled if a minimum number of attendees fail to RSVP.

Please be considerate and RSVP at least one week prior to the scheduled event.

Save money on your electricity bill!

Contact your local chamber today to learn more.



The Chamber Classifieds

SCOTT C. ASH VISUAL COMMUNICATIONS

Providing marketing communications, graphic design, website development, digital media production services. Offering tradeshow displays, printing, signage design and products. Over 25 years of communications excellence.

115 N. Edgewood Ave., Somerset
(814) 443-0592

www.myvisualcomm.com
email: scottash11@gmail.com

HIGHLAND COMMUNICATIONS GROUP

Professional website development and hosting solutions for over 15 years. Responsive web design, search engine optimization, Google site analysis. We create custom websites from both small to large businesses and organizations.

115 N. Edgewood Ave., Somerset
(814) 444-0033

www.highlandcommunicationsgroup.com
email: scottash11@gmail.com or
hcgpa2010@gmail.com

ACE AIR CONDITIONING EXPERTS INC.

York Liberty Dealer. Computer designed heating and cooling systems and commercial refrigeration since 1984.

3056 Whistler Road, Stoystown
(814) 893-5577

www.aceacandheatingexperts.com
email: ace6201@comcast.net

KASHURBA WEB DESIGN GROUP LLC

Offering professional website redesign services. Our websites are custom designed, optimized to show up on Google, affordable to maintain and easy to update! We also build business Facebook pages and provide Internet marketing services. We've been building websites in Somerset for over six years. Our office is located on South Center Avenue in Somerset.

113 S. Center Ave., Somerset
(814) 279-8507

kashurbawebdesign.com
email: joe@kashurbawebdesign.com

Member-2-Member Discounts

A-1 Garage Doors & Openers (814) 443-1413

We sell the best and service the rest. Amarr Garage Doors, LiftMaster openers, residential and commercial, sales-service-installation. 10% discount for Chamber members on garage doors and openers.

SAJ Publishing (814) 445-9695

SAJ Publishing is offering a 20% discount to Chamber members on the following books: "Courage After the Crash" and "Quiet Courage" by local author Glen J. Kashurba, M.D. Royalties for "Quiet Courage" donated to the Flight 93 National Memorial. Visit our website, www.sajpublishing.com, or contact Mary for more information.

Prestige Printing & Graphics (814) 445-2523

20% discount on the first order for any new customer. 10% discount on every order for all non-profit organizations. Call, stop in or email info@prestigeprinting.biz. We print everything but money!

Duppstadt's Country Store (814) 754-4400

Receive 10% off Fiesta Ware table settings with coupon (lowest price).

Duppstadt's Country Store (814) 754-4400

Take \$10 off the purchase of clearance boots from the upstairs shop with coupon.

Security One LLC (814) 629-9614

All Chamber members receive a 10% discount off installation of security systems.

Allegheny College of Maryland (814) 445-9848

10% discount for Chamber members on any course offered through CE.

Alluring Edge Hair & Nail Salon (814) 701-2883

20% off any one service to new clients who are Chamber members.

Damin Printing Company, LLC (814) 615-9138

10% discount offered to any new customer on their first embroidered or printed clothing order. Email jason@daminprinting.com to schedule an appointment at your place of business.

Ophthalmic Associates (814) 445-3730

Purchase 1 pair of prescription eyeglasses and get half off a pair of prescription sunglasses. Cannot combine discount with insurance programs.

Minahan Signs (814) 288-1561

10% off your next purchase of promotional products. Visit minahansigns.com/promotional_items to view our full line.

Bittner Vending, Inc. 800-869-7521

First order of 5 gallon spring water free with cooler rental. Offer good for new customers only.

Kashurba Web Design Group, LLC (814) 279-8507

20% discount on custom websites and website redesigns for Chamber members, plus FREE domain registration and web hosting for the first year!

ADVERTISE YOUR BUSINESS HERE!

Call (814) 445-6431 for more information.

Available Commercial Space

Commercial Space Available (814) 443-6796

For rent

Commercial office/warehouse at 9550 Somerset Pike, Somerset, for rent. Includes on-site parking. Call Stoney Rice at (814) 443-6796

For sale

Commercial/investment property at 9550 Somerset Pike, Somerset, for sale. Includes 2 apartments on second floor and on-site parking. Call Stoney Rice at (814) 443-6796.

BERKSHIRE HATHAWAY HOMESERVICES 800-419-7653

B&B, Apartment Complex

This unique Laurel Highlands retreat sits on 20 acres with mature landscaping and is known as the "Huber House." The compound consists of 3 homes and 15 of the 20 acres offers wooded trails. There is an established rental history. The main home provides 9 bedrooms, 6.5 baths. The carriage home has 2 apartments and a 3-bay garage. Then there is the 3 unit apartment building. While the setting feels secluded you are located minutes to Seven Springs, Hidden Valley, Nemacolin, Fallingwater, Ohioypyle and many other favorite tourist attractions. Visit LaurelHighlandsLiving.com for details.

\$760,000

Contact Robert "Wags" Wagner at (412) 551-1859.

Indian Lake Resort & Banquet Center (814) 701-8877

For sale/lease

Indian Lake Resort & Banquet Center. Includes bar/lounge, dining room, banquet center and 32 guest rooms. Contact (814) 701-8877 or tlstclair@yahoo.com.

Office Space Available (814) 443-4477

Commercial office space available. Lovely renovated historic building steps from the courthouse. 214 E. Union St., Somerset. Law office of Marci L. Miller. Call (814) 443-4477 for more information.

Commercial Space Available (814) 443-1354/(814) 754-8272

Commercial showroom for rent

750 N. Center Ave., Somerset. High-volume traffic next to Maggie Mae's. Formerly Elite Kitchen and Bath.

Angelitto Passaniti (814) 445-7019

For Rent

2,000 sq. ft. on main floor at 118 W. Main St., uptown Somerset. Will subdivide. Includes off-street parking.

Westridge Properties, Inc. (814) 445-4578/(814) 442-7878

For Rent

Westridge Building, Route 31 West, Somerset

2 areas each approximately 2,500 sq. ft. 3-5 offices approximately 300-600 sq. ft.

Northridge Building, 1590 N. Center Ave., Somerset

2 areas, 900 and 1,200 sq. ft. several smaller offices

Law & Finance Building, 133 W. Main St., Somerset

First floor – approximately 3,300 sq. ft. Second floor – approximately 1,600 sq. ft.

Will remodel as needed.

All available at very favorable lease terms.

Office Suite Available (814) 443-1631

Office suite available

Located one block from Somerset County Courthouse in professional building at 202 E. Union St., Somerset. Call Matt Zatko at (814) 443-1631 for details.

Rosina Corner Cottage (814) 442-7559

Retail or office space for rent

Approximately 400 feet. Includes parking. On Main Street at Rosina Corner Cottage. Call Carroll Pucci at (814) 442-7559.

RE/MAX PREMIER, REALTORS (814) 445-4748

111 Revco Road, Somerset

Versatile commercial building with frontage and visibility from North Center Avenue with access from Revco Road. Zoning is commercial and traffic count is 13,000 per day. This well-maintained building has approximately 2,200 sq. ft. currently used for retail and was once a restaurant. It is handicap accessible with easy access from the parking lot. Public water, sewer, gas heat and back-up generator included. \$265,000

650 Barn St., Hooversville

Business opportunity! Existing service station with gas pumps, having 3 grades of fuel and off-road diesel. Large service building with more 6,000 sq. ft. on 2 levels, canopy over pumps and a small convenience store area with office space. New liquid rubber roof last year. Established business with customer base serving the needs for automotive repair and tire sales. \$175,000

Advertise your commercial property here for free!

Contact Sheena at (814) 445-6431.

Get noticed!

Have an upcoming event or special occasion?

Be sure to notify the Chamber so we can help promote it to our members and the public!

Available Commercial Space

Northwood Realty Services, Somerset Office (814) 443-4858

1461 N. Center Ave., Somerset

Nice 1-story home on 1.83 acre commercial lot with paved driveway and parking area with plenty of room for additional parking in rear and will have access to a new traffic light at heavily traveled intersection. Property can be converted to commercial use. Currently 3 bedroom, 2 bath with stone fireplace and 1-car garage.
\$279,000

Contact: Ken Halverson

109 E. Main St., Somerset

3-story brick retail/commercial building with 9,164 sq. ft. in prime uptown location.
\$139,750

Also available for lease. Main floor \$1,250 + utilities. Second floor \$700 + utilities. Finished basement \$600 + utilities.

Contact: Ken Halverson

363 W. Main St., Somerset

Restaurant/bar ready for your business. Includes PA liquor license, restaurant and kitchen equipment and 50 parking spaces. 132 ft. frontage along heavily traveled Main Street.
\$459,000. Available for lease \$4,000/month.

Contact: Ken Halverson

821 W. Main St., Somerset

Well-maintained large brick building has office space on the main floor and basement. Includes 7 offices, conference room, 2 bedrooms, kitchen and a 2-bedroom apartment. Paved parking in front and rear, including 2 garage bays. High traffic area along Main Street.
\$179,500

Contact: Ken Halverson

147 Gateway Road, Somerset

Great commercial site. 3.79-acre prime commercial location near PA Turnpike interchange. Presently improved with motel.
\$1,750,000

Contact: Ken Halverson

339 W. Union St., Somerset

Well located away from the hustle and bustle, this 1-story office building stands tall regarding past history, present availability and future possible uses. Good visibility, layout and fenestration, and its condition is move-in ready. Includes some off-street parking.
\$189,000

Contact: Rita Halverson

Howard Hanna Geary Real Estate (814) 445-6587

103 Grant St., Salisbury

Outstanding small business opportunity. Don't overlook this fully remodeled, virtually turn-key restaurant ready to be opened. Formerly Clark's Restaurant, this eatery was a busy hometown favorite for over 15 years. The possibilities for this space are endless. It could easily be a cafe, bar and grill, hometown eatery or coffee bar. Don't miss all the updates from Amish barn wood outside to a total remodel inside. A ton of thought and detail were put into the metallic walls and oil-rubbed bronze light fixtures.
Call Lisa Richards.

Somerset Pike, Jenner Township

Restaurant/lounge opportunity. Parking for 75+ cars, restaurant seating capacity of 230, bar seating 30+. Banquet facilities, private rooms for larger parties.
\$375,000

Call Joe Geary.

Glades Pike, Somerset Township

Ranch-style office building for lease. Great for any professional business, medical offices or training facility. Handicapped accessible, 20+ parking spaces, high traffic for optimum visibility. Available immediately.
\$2,100 per month.

Call Joe Geary.

RMB Realty (814) 444-9400

Commercial – 9,000 sq. ft.

1986 N. Center Ave., Somerset. 5.6 acres. Building ideal for equipment sales/servicing. Includes loading dock, 2 10' at-grade overhead garage doors. High visibility location.

Asking \$335,000

Contact: Mike Boland

Professional Offices – 4,200 sq. ft.

451 Aberdeen Drive, Somerset. Mixed use property. Class A professional office space. Available immediately. Perfect for owner/operator. Multiple established income-producing tenants and large residential unit.

Asking \$425,000. Under contract.

Contact: Mike Boland

Reels Corner – 11.5 acres

Located at intersection of Routes 30 and 160. 3,000 sq. ft. remodeled barn. Former restaurant (existing septic). Large, mostly level lot. 500 ft. frontage on Route 30. Additional approved perc test on property.

Asking \$289,000

Contact: Josh Boland

Professional Office/Retail – 1,300 sq. ft.

118 S. Center Ave., Somerset. Uptown location, great visibility, high traffic. Large, open main office, private office, conference room, ADA restroom, 2 parking spaces.

Asking \$600/month

Contact: Josh Boland

Retail – 1,320 sq. ft.

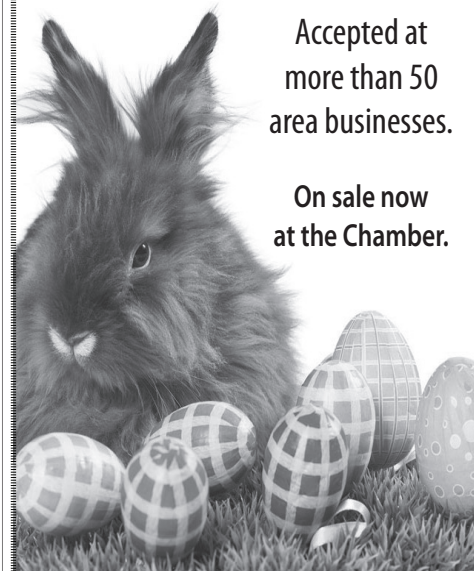
1490 N. Center Ave., Somerset. High visibility. Great location at new signalized intersection. 13,000 vehicles per day. Located in busy professionally managed strip center. Two ADA restrooms.

Signage. Many possibilities.

Asking \$1,309/month

Contact: Mike Boland

The Easter Bunny gives Local Loot and so should you!



Accepted at
more than 50
area businesses.

On sale now
at the Chamber.

In April 1912...

To celebrate the Chamber's 105th anniversary in 2017, each month we're looking back at significant events that also happened in 1912, the year of the Chamber's founding.

April 1: The city of Branson, Mo., is incorporated.

April 4: Chinese republic proclaimed in Tibet.

April 6: The electric starter first appears in automobiles.

April 12: Clara Barton, founder of the American Red Cross, dies.

April 13: Royal Flying Corps (later the Royal Air Force) forms.

April 15: The RMS Titanic sinks at 2:27 a.m. off the coast of Newfoundland.

April 17: Al Jolson's "Ragging The Baby To Sleep" becomes the first unofficial gold record.

April 20: Fenway Park officially opens with the Boston Red Sox beating the NY Highlanders, 7-6. Tiger Stadium opens in Detroit with the Detroit Tigers beating the Cleveland Indians, 6-5.

Voter registration deadline

The deadline to register to vote in Pennsylvania's May 16 Municipal Primary Election is April 17. Contact the Somerset County Voter Registration Office at (814) 445-1549 or visit www.votespa.com for more information.

Website hits for February 2017

Total website hits: 2,904
Total pages viewed: 10,410
Total visitors: 2,423
Calendar: 1,195
Home: 835
Member Directory: 449
Contact: 173
Somerset County Leadership: 172
E-Dispatch: 161
Tourism – Attractions: 142
Tourism: 117
Corsa Coal membership directory listing: 107
Somerset County workforce education: 107

Social media likes and followers

Facebook: 1,620 Twitter: 1,114
 Pinterest: 139 LinkedIn: 167

Somerset County Chamber of Commerce

601 N. Center Avenue, Somerset, PA 15501
 (814) 445-6431 FAX (814) 443-4313
 E-mail: info@somersetcountychamber.com
 Website: www.somersetcountychamber.com

ADDRESS SERVICE REQUESTED



Keep Us Updated! Fax, Mail, or E-mail Address Changes Today.



STD. PRSRT.
 U.S. POSTAGE
PAID
 SOMERSET, PA 15501
 PERMIT NO. 76



**Somerset County Chamber of Commerce
 2017 Officers and Board of Directors**

President Michele James, Snyder of Berlin
Vice President Mark Bower, Rockwood Area School District
Secretary..... Lladel Lichty, United Way of the Laurel Highlands
Treasurer Danni Conn, Beggs Brothers Printing, LTD

Craig Saylor, *Past President*
 Somerset Hospital

Lisa Bittner
 Somerset Trust Company

Mike Boland
 RMB Realty

Becky Flyte
 Daily American

Terry Heinrich
 North American Höganäs, Inc.

Scott Hollern
 Hollern & Koontz Insurance
 Agency

Shawn Kaufman
 Riggs Industries

Hank Parke
 Somerset County Rails To Trails
 Association

Chris Plummer
 Seven Springs Mountain Resort

Pamela Tokar-Ickes
 Community Foundation
 for the Alleghenies

Mikel Vaughn
 AK Coal Resources, Inc.

Gerald Walker
 Somerset Co. Commissioner

Fred Will
 Sugar Grove Antiques

Chamber Office Staff

Executive Director..... Ron Aldom
 raldom@somersetcountychamber.com

Office Manager Sandy Berkebile
 sandyb@somersetcountychamber.com

Communications Coordinator..... Sheena Baker
 sheenab@somersetcountychamber.com

Tourism Counselor/Receptionist..... Melissa Holiday
 info@somersetcountychamber.com

Upcoming Chamber events

April 12 Eggs & Issues: Benefits to Boost Your Business, 7:30 a.m.,
 Somerset Country Club, 416 Plank Road, Somerset

April 27 Laurel View Village Mixer, 5 to 7 p.m., Fresh Harvest, 2000
 Cambridge Drive, Davidsville



**Somerset School Picnic Day
 at Idlewild Park & SoakZone**

Join in the fun at Idlewild Park & SoakZone for this year's Somerset School Picnic Day Saturday, June 3. Discounted tickets of \$21 (regular admission \$44.99) will be available for purchase at the Chamber office May 1 through May 26, Monday through Friday, 9 a.m. to 5 p.m. Cash only. Tickets are non-refundable, but may be used other times of the season. See tickets for details. Call the Chamber at (814) 445-6431 or Idlewild Park & SoakZone's Group Sales Department at (724) 238-3666 for more information.

**The Somerset County Chamber of Commerce Accepts
 These Major Credit Cards:**

