

# PROGRES S



## SOMERSET COUNTY CHAMBER OF COMMERCE

*Networking Businesses to Enhance Economic Opportunities*



### MORE MEGASHOW

*See Page 9*

**JANUARY-FEBRUARY**

**2019**

Attend a multi-chamber business reception with 13 organizations.

Somerset County Chamber  
Leadership Somerset County  
Pittsburgh Business Exchange  
Greater Latrobe/Laurel Valley Chamber  
Cambria Regional Chamber  
Westmoreland Chamber  
Ligonier Valley Chamber

Norwin Chamber  
MonValley Regional Chamber  
Fayette Chamber  
Greene County Chamber  
Monroeville Area Chamber  
Butler County Chamber

Don't miss the perfect networking event to kick off 2019. Mix and mingle this ski season with a business mixer and/or weekend getaway at Seven Springs, Friday, January 4! Leadership from thirteen regional business organizations along with some of their local government will be attending to socialize.

Visit the resort's Matterhorn Lounge from 5 - 8 p.m. for a networking reception. Meet with friends and colleagues while getting to know our friends from the greater Pittsburgh area as we come together for this Friday night networking event.

Admission includes an array of hors d'oeuvres, drink specials, prize drawings and more. Pre-registration is required by visiting [www.WinterKickoff2019.com](http://www.WinterKickoff2019.com)

Seven Springs is also offering special guest rates for skiing prior to and after the mixer. Discounted rooms (\$179 + tax) for January 4 are also available. To book your room or to receive these rates, contact Seven Springs at 800-452-2223.

## MEGASHOW

### Home, Garden, & Business Expo

The Megashow Home, Garden & Business Expo, hosted by the Somerset County Builders Association (SCBA) and the Somerset County Chamber of Commerce, will return to Somerset March 22-24.

The Megashow draws more than 2,000 attendees who shop from and visit a variety of businesses, vendors and organizations. Now in its ninth year, the expo always features something for everyone, including a designated "For the Ladies" section, children's activities, a food court, prize drawings and more.

Exhibitor registration information will be available on the SCBA and Chamber websites. Megashow sponsorships are available, including businesses not planning to be exhibitors.

Contact Karl Glessner at [somersetcountymegashow@gmail.com](mailto:somersetcountymegashow@gmail.com) for exhibitor information. For other details on the Megashow, visit the Megashow event page on Facebook.

## Upcoming Chamber Mixer

# LAUREL VIEW VILLAGE

&

# FRESH HARVEST RESTAURANT

**Laurel View Village and Fresh Harvest Restaurant Mixer**  
**Thursday, February 7th 4 - 6 p.m.**

**Laurel View Village**  
1600 Cambridge Dr. Davidsville, PA 15928

**Special Music, Displays, Guests, & Giveaways**  
**Meet the New CEO of Laurel View Village**  
*There's more to life at...*

*Laurel View*  
VILLAGE

*PLEASE NOTE: Mixers may be cancelled if a minimum number of attendees fail to RSVP. Please be considerate and RSVP at least one week prior to the scheduled event.*

## GRAND OPENING CELEBRATIONS

The Chamber joined several businesses for special occasions.



*Above: George & Bob's Computer Store*  
*Diagonal: Merchant Village*  
*Right: Not 2 Shabby*

Ribbon cutting ceremonies were held for three local business in the last quarter of 2018. Stop in to any of these establishments to welcome them to the area or their new location.

## Build It and They Will Come

**By Ron Aldom**

*Executive Director,*

*Somerset County Chamber of Commerce*

I can still hear James Earl Jones telling Kevin Costner, "they will come, they will come from cities, farms, from places you never heard of, but they will come". In the movie, Ray (Kevin Costner) dreamed it, built it and believed in it and in the end, they did come.

While his was about a baseball field in Iowa, our Field of Dreams could best be described as a Road of Dreams in Somerset County, Pennsylvania.



**Ron Aldom**

Route 219 opened an 11-mile section on November 21st that historically, changed this county forever. Just like that field in Iowa, this road was a dream for many people, who never gave up and finally it was built. Plus, they share the similarities of being rural and that people came because they believed in it and saw the opportunity to be a part of something special, something that made them feel good and that it was the right thing to do. This is why they will come.

They will come in the form of businesses, visitors, investors and people looking for the perfect place to raise a family and build a career, but they all needed a road to make it happen. A quick and safe passage in and out of the county, so they could easily connect with the world, while enjoying the beauty and quality of life of Somerset County and the region. All we need to do is invite them, welcome them and help them understand why they came here. It is up to us to make our Road of Dreams a Road of Prosperity for all of us. A place where our youth don't leave and, in fact, stay to build their careers and raise their families. A place that becomes a destination for others looking for all that we hold sacred and enjoy all that we have in Somerset County.

The movie focuses in on the passion people have for baseball and how it has spanned the generations and is a part of our culture. I witnessed that same passion on a cold November morning, when over 200 hardy souls came out to be a part of a ribbon cutting that officially opened a roadway. They all knew that it is our Road of Dreams and that "they will come".



# Member News

**Donations made:** Boyer Financial Planning presented a \$750 check to the Salvation Army Somerset Service Center in honor of his clients.

**#SomersetCountyGives:** Organizers of the Community Foundation for the Alleghenies are raising funds for the local nonprofit community. Donors can specify their areas of interest with four categories: the Children, Youth, and Families Fund, Cultural and Heritage Fund, Veteran's Initiatives Fund, and Volunteer Firefighters Fund.

**Rotary Foundation:** The Rotary Club of Somerset celebrated the addition of about \$25,000 to the Foundation and new levels of support.

**College courses:** Allegany College of Maryland opens spring registration for students. The college offers students over 600 course selections.

**Honoring veterans:** Shanksville-Stonycreek students took part in a Veterans Day ceremony at the Flight 93 National Memorial.

**Awards:** Pennsylvania Highlands Community College recognizes their Marketing & Communications Team for being awarded with four District 1 Medallion Awards from the National Council for Marketing and Public Relations.

**Awards:** The Pennsylvania Highlands Community College KEYS Program was awarded with the "Friends of Extension" by Penn State Extension due to their great collaborative efforts when providing training to students within the program.

**Top provider:** Somerset Hospital Home Health has been named to the top 500 of the 2018 HomeCare Elite.

**New warden:** The Somerset County Prison Board unanimously approved the hiring of Michael Porter, of Texas, as the county jail's new warden.

**Technology start-up:** Ben Franklin Technology Partners begins their "8-Week Start-up Accelerator" intensive program at the Uptown Works in Somerset Borough for startups in technology related fields. At the end of the eight-week program the winner or winners will split \$10,000.

**Legion donates:** The 11th annual Dress to the Nines event was held at the Stoystown Legion donating the venue as well as giving a monetary donation of \$1,500.

**Auction:** The live and silent auction for the Dress to the Nines formal night raised more than \$16,000.

**UPMC affiliation:** The Somerset Hospital Board and UPMC having a binding integration and affiliation that should be finalized early this year. The agreement will not affect patient care or insurance coverage but will bring cutting-edge healthcare closer to home.

**Milken educator award:** Eagle View Elementary teacher, Katherine Bobby received the prestigious award that recognizes and inspires excellence by honoring top educators around the country with a \$25,000 unrestricted check to support their work moving forward in educating the students. Bobby was the only educator in Pennsylvania to receive the award.

**Gifts from fundraisers:** Grace United Methodist church gave \$3,160 to the Next Step Center from the church's profits in thanks to their Italian Night dinner. The same church also presented a check for \$2,160 to the Salvation Army's local Winter Heat Assistance Program. The church raised this donation with the profits from their food booth at Mt. Craft Days festival.

**Schools receive grants:** Berlin Brothersvalley, Conemaugh Township, North Star, Meyersdale, Rockwood, Salisbury Elk-Lick, Shade Central City, Shanksville-Stonycreek, Turkeyfoot Valley, and Windber school districts each received \$25,000 grants to improve school safety.

**Beloved priest passes:** The Rev. Daniel O'Neill passed away due to ongoing medical issues in October after devoting his life to God and the people of his parish. Father O'Neill had been at St. Peters Parish for the past 10 years.

**Walk-a-thon:** Meyersdale Area Elementary School, along with family, friends, and their community raised more than \$13,000 which will directly benefit students through programs and activities sponsored and supported by the Boosters.

**Environmental achievement:** The US Department of the Interior's Office of Environmental Policy and Compliance awarded the Somerset Conservation District with a national Environmental Achievement Award recognizing the district for its contributions to the abandoned mine

drainage abatement efforts in the Lamberts Run watershed.

**Renovation of Central Park Center:** Pennsylvania Highlands Community College officials and District 71 Representative Bryan Barbin announced a \$6,000 project to renovate Central Park Center in Johnstown with classroom space and a conference room.

**Apollo awards:** The Community Foundation for the Alleghenies awarded the 2018 Apollo Awards to Dr. Camille and Dorothy Maravalli, Dr. Richard and Dr. Diana Schroeder, and Dr. William and Dr. Kathy Thompson. This award is given annually to members of the medical community who have made significant contributions to improving the quality of life in the region.

**'Hometown Heroes':** The Daily American honored 13 members at the 3rd Annual Hometown Heroes Awards Breakfast. This year the awards were presented to: Tammy Bailey, Sarah Bittner, Cindy Breen, Henry Cook, Paula Eppley-Newman, John Fiesta, Scott Kovach, Tim Mateljan, Justyn Patton, Fred Rosemeyer, Zachary Sloane, Joan Wheeler, and Loretta Wilmoth.

**Raiders & Rockets:** The Meyersdale and Rockwood school districts received Career Readiness Mini-Grants from the state with \$2,855 going to the raiders and \$4,900 going to the rockets.

**Walking program:** Berlin Brothersvalley School District Adult Walking Program runs through the end of March so adults wishing to exercise do not have to brave the elements.

**Family business stays in family:** Mark's Harness Shop has changed ownership from Mark Brenneman, the Amishman who established the business in 1973, to his grandson Cephas Fisher.

**GAP Relay:** The Rockwood Area School District teachers and administrators raised almost \$17,000 for two school programs during the Great Allegheny Passage Relay. The relay was a 150-mile race from Cumberland, MD to Pittsburgh.

**Land project:** The Somerset County Redevelopment Authority is working to bring properties back on the tax rolls that have been abandoned or tax-delinquent for productive use.

**Decorating contest:** Laurel Arts and Somerset, Inc. have asked students around

# Member News

the county to design holiday decor displays as part of a competition with winners receiving scholarships: \$500 people's choice, \$250 artist, \$250 technical.

**Microentrepreneur program:** JARI Growth Fund has received \$600,000 from the USDA for a Rural Microentrepreneur Assistance Program to help fund businesses and entrepreneurs throughout the region, including Somerset County.

**Request for over \$2 million:** Berlin Borough Somerset County is requesting more than \$2 million for infrastructure projects across the county. Commissioners are applying for entitlement funds through the Community Development Block Grant Program. The majority of these funds are being requested to install water lines in Lower Turkeyfoot Township and Conemaugh Township.

**Supply Team, LLC:** New member Supply Team, LLC, formerly AEP COR Geothermal, is now a Chamber Member. Supply Team, LLC is a distributor, handling heating and air conditioning, and also handles water treatment.

**Orchestra receives grants:** The Community Foundation for the Alleghenies awarded two grants to the Johnstown Symphony Orchestra, \$2,939 for the Young People's Concert & \$2,300 to the Mother's Day Concert.

**Penn Highlands recognizes employee:** Pennsylvania Highlands Community College congratulates Sean McCool on being named a 2018 District 1 Rising Star of the Year by the National Council for Marketing and Public Relations.

**Funds raised for PA Breast Cancer Coalition:** The USSCO Federal Credit Union members and employees raised \$440 during the month of October to support the PA Breast Cancer Coalition, helping local families dealing with breast cancer.

**'Dementia Live':** Somerset Hospital has a course for caregivers of dementia patients to help them better understand what it's like to live with the disorder.

**Orchestra receives donation:** The Johnstown Symphony Orchestra Somerset Auxiliary gave \$12,000 to the orchestra from their 2018 fund raising efforts.

**Holiday donation drive:** Sheetz for the Kidz has begun its 26th annual holiday donation drive for underprivileged kids. The company's 582 stores support 16 children from local communities by partnering with The Salvation Army to receive wish lists from local families.

**Robotics competition:** Pitt-Johnstown held the FIRST Tech Challenge West Pennsylvania Qualifier with 23 robotics teams from all over PA, Ohio, Maryland, and one from Wisconsin. Teams showed off their ability to program and build a robot to do simple tasks along with being judged on activities that tested their ability to market, fund raise, and give presentations.

**Toys for Tots:** Somerset Rural Electric Cooperative handed out LED light bulbs in exchange for toys to benefit the Toys for Tots program.

**Donation to breast center:** Member of the Girls Night Out Altoona committee donated \$38,500 to the Joyce Murtha Breast Care Center in support of patient care services.

## Arcadia Theater

**Business:** Arcadia Theater

**Owners/Managers:** Gerry Ledney, Executive Director, along with a Board of Trustees

**Address:** 1418 Graham Avenue, Windber, PA 15963

**Phone:** 814.467.9070 **Email:** info@arcadiawindber.com **Website:** arcadiawindber.com

**Year established:** Originally opened in 1921 but reopened consistently on October 31, 1998.

**Number of employees:** 2 full-time employees - Gerry Ledney & Patty Kiniry, Director of Public Relations/Marketing; box office is staffed by volunteers

**Hours of operation:** Box Office: Monday - Friday, 10 a.m. - 4 p.m.

**Year the business joined the Chamber:** 2000

**What does the business do?** The theater seats 694 patrons for a variety of productions including musicals, nationally acclaimed musical artists from the 1950s to the present, children's shows and theater camps, as well as Las Vegas and Atlantic City entertainers. Shows are now held once a month beginning in February of each calendar year. Tickets for shows can be purchased online or by calling the box office, Monday - Friday from 10 a.m. to 4 p.m.

**How did the business begin?** The Windber Lumber Company, a subsidiary of Berwind-White Coal Mining Company, built the theater with money donated by a group of stockholders known as the Windber Theater Corporation. The theater provided entertainment to the many coal miners of Windber and showcased many vaudeville acts as well as cinema productions. In 1929, the theater hosted silent movies and "talkies."

**Did you know?** The theater is open to schools, groups, and organization for historical tours, can offer discounted rates for groups of 25 or more, and is available for rent by community, business, and regional groups.

**Why do the owners think being a Chamber member is important?** "We are part of the community and it's important to serve the community that serves you. We want to give back and we have enjoyed being part of another organization that supports the community. We have also had networking opportunities through our membership."



**Want to see your business or organization featured here? Email [info@somersetcountychamber.com](mailto:info@somersetcountychamber.com).**

**Members are featured on a first-come, first-serve basis.**



# New Chamber Members

## Catalyst Connection

**Terri Campbell**

**2000 Technology Drive, Pittsburgh, PA 15219**

**412.918.4283**

**catalystconnection.org**

A private non-profit organization headquartered in Pittsburgh, that provides consulting and training services to small manufacturers throughout southwestern Pennsylvania. They forge partnerships to accelerate revenue growth, improve productivity and bring new resources to their clients including:

- Organizational Development services to create a culture of engaged employees.
- Business Growth services to focus on sales growth through new customers, new markets, or new products.
- Operational Excellence services to help produce better quality products faster and at a lower cost.



## Curtis & Grammy Adventures, Inc.

**Ella J Holly**

**101 E. Main Street, Frostburg, MD**

**240.284.2222**

**curtisandgrammy.net**

An educational line of storybooks, audio programs, and presentations used to instill a service mentality in youth by encouraging the performance of daily acts of kindness while having lots of fun.



## EJ Holly Voices

**Ella J Holly**

**101 E. Main Street, Frostburg, MD**

**240.920.9283**

**ejhollyvoices.com**

Professional male and female voices providing audio for radio and television commercials, corporate narration, singing jingles for company branding, and political campaigns. They offer copywriter services and full project production. Free consultations.



## Eternal Memorial Designs, LLC

**Rich Bailey/Sharon Novatny**

**622 Demuth Street, Johnstown, PA 15901**

**814.915.4157**

Locally owned company with 23 years experience in the industry providing families with a variety of quality memorial products and services at an affordable price. They strive to ensure their customers receive personalized attention as they

compassionately guide them through the difficult memorial arrangement process. They offer business hours of Monday - Friday 9:30 a.m. to 4:30 p.m. and in-home appointments on Saturday evenings.



## Great Clips

**Jen McCurdy**

**915 N Center Avenue, Somerset, PA 15501**

**814.444.5800**

**greatclips.com**

The salon, owned by Robert Bell, is a family run business that strives to deliver the best customer service every time a customer visits the salon. The salon joins a network of 4,300+ Great Clips salons across North America. Great Clips offers the latest styles at unbeatable prices. Adult haircuts are only \$13 and senior/children's haircuts are \$10. *The new Great Clips at Somerset Plaza is offering haircuts for only \$4.99 beginning December 15 through January 11th.* Not only can you save money by visiting Great Clips, but you can get in and get out fast using Online Check-In on greatclips.com or with the Great Clips app on your phone.



## Wagner's Maple Products

**Jeremy Walters**

**152 Sugar Kamp Lane, Salisbury, PA 15558**

**814.242.2497**

**wagnersmapleproducts.com**

Making pure PA maple syrup and maple products. Products include maple sugar cakes, maple cream, maple sugar, and maple coated almonds, walnuts, and peanuts. They offer tours of the historic camp and have a large display of maple antiques. Accommodating groups up to 50 people. The camp is located on a farm with a beautiful country setting and a trout hatchery.

## Giant Eagle, Inc.

**Ian Rodgers**

**1606 North Center Avenue**

**Somerset, PA 15501**

**814.443.4300**

**gianteagle.com**

## GL Kaplan, PLLC

**Gary Kaplan**

**1946 South Ridge Way,**

**PO Box 4331**

**Hidden Valley, PA 15502**

**412.780.6012**

## Mauler Construction Group, LLC

**Justin Mostoller**

**134 Beaumont Drive**

**Somerset, PA 15501**

**724.970.1566**

## Merchant Village, Inc.

**Alecia Zimmerman**

**1534 North Center Avenue #190**

**Somerset, PA 15501**

**814.485.2196**

**merchantvillagepa.com**

## Mitch's Fuel & Food

**Pam Hartman**

**479 Latrobe Avenue**

**Confluence, PA 15424**

**814.395.3177**

## New York Life

**Anita M. Petroski**

**649 Chippewa Road**

**Somerset, PA 15501**

**215.908.4220**

## Salisbury- Elk Lick School District

**Joseph Renzi**

**196 Smith Avenue**

**Salisbury, PA 15558**

**814-662-2741**

**selsd.com**

## Somerset Volunteer Fire Department

**Jerry Lyons**

**340 West Union Street,**

**PO Box 121**

**Somerset, PA 15501**

**814.445.4343**

**sfd@somersetfire.com**

## Friend of the Chamber

**Robert Naugle**

## Thank you, Members!

A sincere thank you to all the businesses and organizations that have paid their membership dues and rejoined the Chamber for 2019. Your support of the Chamber is both an investment in your business and the community which allows the Chamber to keep working for you and your interests. Visit the Chamber website to see a full list of members who have renewed their membership for 2019.

## National Anthem Auditions

The Altoona Curve will host a National Anthem Audition on January 19th in the Somerset County Courthouse to coincide with the Fire & Ice Festival. Singers will be able to audition for a chance to sing the "Star Spangled Banner" at Peoples Natural Gas Field during the upcoming Curve season.

Registration for the event will open at 9:30 a.m. and the singing tryouts will begin at 10 a.m. and run until noon inside the courthouse. You can sing as a group or as an individual.

Anthem lyrics will be provided upon requests. No CDs, tapes, emails or digital submissions will be accepted.

For more information please contact the Altoona Curve at 877-99-CURVE.

## Grants being put to use

**By Debra Hoover**

*Business Services Coordinator, Pennsylvania CareerLink*

The Business Education Partnership (BEP) grant activities for Somerset County are in full swing. Tableland Services, Inc. is the local Title I program subcontractor for Somerset County and is responsible for providing services directed to young adults between the ages of 14-24. Tableland/CareerLink staff, local business partners, the Chamber of Commerce and educational partners work together in many exciting events that use local business employers to speak to our next generation workforce about in-demand careers unique to our County.

### Pathways Career Conference for Young Adults

The Pathways Career Conference for 8th/9th graders was held Oct. 16 & 18, 2018 from 8:45-11:00 AM each day. The purpose of this important annual event is for junior high students to learn from local employers about in-demand occupations, details including education/training; STEM (Science, Technology, Engineering and Math) relation; and who might be well suited for these jobs. Presenters give great encouragement to the students to consider working in Somerset County once they have completed their education/training. Students can use this experience to gain ideas for potential job shadowing experiences or internships. The event is held at the Somerset County Technology Center. On Tuesday, Oct. 16, there were 327 students who attended, from the following school districts: Conemaugh Township, Meyersdale, Rockwood, Shanksville, Somerset Christian, Turkeyfoot and Windber. There were 337 8th/9th graders on Thursday, Oct. 18th from these schools: Berlin, North Star, Salisbury, Shade and Somerset. Thanks to the Technology Center for providing

the location for this event and to the staff/faculty/administration for their tremendous help and hospitality.

*Pennsylvania*  
**CareerLink**  
SOMERSET COUNTY

Presenters represented the following in-demand career clusters: Health science; construction; information technology; agriculture; hospitality management; law and safety; and manufacturing. Thanks to the organization representatives who gave their time and talents for two mornings at the Technology Center. Presenters were from: Laurel Hill State Park; Bricklayers Union Local 9; Cement Masons Local 526; Riggs Industries; Somerset Hospital; SCTC Dental Program; Seven Springs; Somerset Co. Chamber of Commerce; Somerset Co. Sheriff's Office; Somerset Borough Police; PA State Police; ITI Trailers and Truck Bodies; and Tableland Services IT Department.


Additional BEP activities through mid-November have included approximately 325 students from several school districts {Somerset, Rockwood, Shanksville, Meyersdale, North Star, Windber} who have participated in some of the following: Success is Intentional Conference; Coffee Connections career networking breakfast events; Career exploration and awareness workshops; health careers job shadowing/tours at Somerset Hospital, Conemaugh Meyersdale Medical Center and Vantage Physical Therapy & Rehabilitation in Boswell. To all the businesses, presenters and volunteers—thanks for your invaluable partnership.

Look for BEP activity updates in future Chamber newsletters including a new initiative--Cool Jobs in Somerset County Video Contest.

## Youth Tour in Washington D.C



**Somerset Rural Electric Cooperative, Inc.**

A Touchstone Energy® Cooperative 

Each year Somerset Rural Electric sponsors area high school juniors on the National Rural Electric Youth Tour, a week long trip to Washington, D.C with all expenses covered for this educational trip.

When in Washington, students join over 1,800 other students from towns and small cities all over rural America.

On the tour, students will learn about electric cooperatives, American history and U.S. government. Students will attend educational seminars and visit with their elected officials.

They can see historical sites in and around Washington—Arlington Cemetery, the monuments, the U.S. Capitol, the Smithsonian and countless other places.

Winners are determined in a competition with boys and girls from area schools. The competition includes an oral quiz, personality judging, and an essay contest, in addition, students must be in the upper 40 percent of the class and have displayed leadership qualities, strong character and sound moral principles. Each nominee will be required to participate in a selection meeting scheduled for February 6th. The competition will be conducted with a panel of judges, and an essay subject assigned for final judging. Detailed instructions can be mailed to each nominee prior to the February meeting.

This is an all-expense paid trip from beginning to end, with only spending money needed by the participant. Somerset Rural Electric winners will join a contingent of over 90 youth from other cooperative in Pennsylvania. If you have someone you'd like to nominate please visit [www.somersetrec.com](http://www.somersetrec.com); the "Youth Tour Application" must be completed and returned to Somerset Rural Electric Cooperative, Inc. no later than Wednesday, January 23, 2019.



## Tower of Voices

The Tower of Voices at the Flight 93 National Memorial has been nominated for *USA Today's 10 Best Attractions of 2018*. This is an awesome opportunity to share the memorial with potential visitors and our local residents.

The goal of this campaign is to share in your social media outlets as much as possible and garner as many votes as possible. Prior campaigns have seen a full range of social media influencers: a US Senator, Governors, celebrities, mayors and more.

Voting is open now, runs for four weeks only and **ENDS ON Monday, January 7**. You can rock the vote at <https://www.10best.com/awards/travel/best-new-attraction-2018/> and of course, share the contest URL with everyone you can. The public can vote once per day, per category.



## TechCelerator @Somerset

Ben Franklin's TechCelerator @Somerset is inviting the area's emerging tech-entrepreneurs to participate in an intensive 8-Week Startup Accelerator. The program provides up to \$1,000 toward initial legal, accounting, or customer discovery costs plus the opportunity to pitch a business idea to a panel of potential investors at the completion of the course. The top team will receive up to \$10,000 to help get their business from StartUp to UP and running.

Program Dates: January 22 - March 14, 2019 at Uptown Works

- Tuesday Group Class: 10 am - 12:15pm followed by individual company mentoring.

- Wednesday Individual Company Class: 9:30am; 11am; 1:30pm; 3pm

In addition to the financial gain, companies will walk away with a viable business model, a market research report, a list of networking contacts, a path forward in only eight weeks. Space is limited and applications close on **January 10, 2019**.

For more details, contact Uptown Works 814.701.0762.

## Scholarships at ACM



Students seeking scholarships to attend Allegany College of Maryland may apply online at [allegany.edu/scholarships](http://allegany.edu/scholarships) for the 2019-2020 academic year.

Scholarship applications are open to those who have applied for general admission to ACM. An ACM username and password is required.

The online program automatically matches applicants to scholarships based on specific criteria. Applicants may also apply for other scholarships, answer supplemental questions and conduct scholarship keyword searches.

Students may receive up to three ACM scholarship awards or \$2,500 per academic year. Scholarship criteria may include enrollment in a certain curriculum, attendance at a particular campus, geographic residency, academic merit and/or financial need. ACM awards over \$1 million in scholarships annually through the generosity of its benefactors.

Call 301-784-5200 or email [sforeman@allegany.edu](mailto:sforeman@allegany.edu) for additional information.

## Environmental Education Grant

The Department of Educational Protection (DEP) is requesting grant applications for projects ranging from creative, hands-on lessons for students, teacher training programs, and outdoor learning resources to conservation education for adults. The Environmental Education Grant Program was established by the Environmental Education Act of 1993, which mandates that five percent of all pollution fines and penalties collected annually by the Department of Environmental Protection be set aside for environmental education. Eligible applicants include public and private schools, colleges and universities, county conservation districts, non-profit organizations and businesses. Organizations may apply for mini-grants of up to \$3,000 or general grants up to \$25,000. **Deadline: January 11th, 2018**

## From the desk of

**Shawn Kaufman**

*President, Somerset County Chamber of Commerce  
Director of Human Resources, Riggs Industries*

Dear Fellow Chamber Member,

Because of the publishing time line, I'm writing this a few weeks before Christmas.

During this time of the year, the mind wonders to friends and family with whom we hope to reconnect over the holidays. For many of us this

includes people who have moved out of the area. Some of these folks did so reluctantly in search of work.

The present employment situation is much different, and frankly very exciting. In our region, we have countless jobs that are going unfilled because we lack people. These positions are available at all levels within county employers from entry level service jobs, to basic and advanced manufacturing positions and the skilled trades. Tourism is always full of opportunities. Professional and management jobs are not excluded in this new era. County employers are scrambling to fill these positions.

Times have changed for the better; we have jobs, but not the people. This certainly a different environment than most of us are accustomed.

As business leaders, the next time you reconnect with a friend or loved one who moved out of town ask them if they would consider coming home. While we're at it, isn't it time to change the way we talk to our young people? For far too long many of us have been negative regarding the employment prospects of our area and have been telling our young people that they have to move away in order to find a job and become successful. The kids are listening. At a recent chamber event roughly 80% of the high school students responded that they would be perceived as unsuccessful by their peers if they remain here after graduation. Our region is on the upswing. Mining has come back to life, manufacturing is booming and the healthcare sector is expected to grow with UPMC investing capital into the Somerset Hospital along with the pending construction of a Conemaugh outpatient facility in Somerset. Let's not forget about the newest stretch of 219. There are plenty of jobs, the cost of living is affordable, and we have much to offer for the outdoor enthusiast. Moreover, it's home!

Time to change how we think and what we say. Somerset County is back and there are great things on the horizon.





## Note of Thanks

For the last 6-plus years, I've had the pleasure of working behind the scenes as the communications coordinator for the Somerset County Chamber of Commerce. In that role I've worked to keep our members informed on important Chamber updates, what was happening with their fellow Chamber members and what new initiatives they could expect to better serve their businesses and organizations. In a larger sense, though, I focused on connecting the community with our local businesses, attractions and especially area

events through our now robust online calendar and growing social media presence. I made it my mission to dispel the myth that "there's nothing to do here." (If you visit the Chamber website or Facebook page, you'll find there's ALWAYS something to do.)

Along the way I met some incredible people and made lifelong friendships, and I found out what it truly means to be part of a community. Some of the experiences were fantastic, too. How many people can say they witnessed a new U.S. Naval ship named after their home town being commissioned?

So now as I move on to the next chapter of my life, I want to say thank you to Ron, Sandy, the Chamber board, volunteers and all those I've met or worked with along the way. Thank you for everything you do for America's County® and my hometown. I wish you all the best in the future.

## Thank you for your dedication



Pictured Front: Hazel Hillegas, Second Row: Pat Beggs and Pauline Walker, Third Row: Sharon Hern and Merylyn Scribner, Back Row: Carla Barclay and Mollie Baker

The Chamber relies upon community volunteers to help the office run efficiently. These volunteers have assisted with visitors, aided the staff with requests for information, helped at Chamber events and assembled newsletters and various mailings throughout the year. The Chamber would like to recognize the volunteers who selflessly gave their time in 2018.



**Swiss experience:** The charming town of Zermatt sits beneath the Matterhorn and is an overnight stop on Epic Journeys' Best of Switzerland tour.

## Book early, save big on Switzerland experience

Cynthia Watters of Epic Journeys LLC, Johnstown, invites area residents on a nine-day tour of Switzerland June 8-16.

On this tour, see "the best of Switzerland" with visits to Zurich, St. Moritz, Zermatt, Lake Geneva, Berne and Lucerne. The tour also includes forays into Liechtenstein and Italy with stops at Vaduz, Lake Como and Lugano, among others.

Travelers will see and experience true Alpine splendor, from the region's deep lakes and picturesque valleys to its quaint villages and well-known peaks, like the Matterhorn.

The tour includes breakfast each day as well as a welcome dinner in Zurich and a farewell dinner in Lucerne. A full itinerary is available at [www.epicjourneystours.com](http://www.epicjourneystours.com).

The cost of this trip is \$2,689 per person (double occupancy), plus airfare.

For more information on this or other trips, visit [www.epicjourneystours.com](http://www.epicjourneystours.com) or call (814) 266-5070.



## Showcase your business by hosting a Chamber mixer!

Mixers are a great way to network while advertising your business' or organization's products and services.

**Book your mixer today by contacting Acacia at**

**[asvonavec@somersetcountychamber.com](mailto:asvonavec@somersetcountychamber.com)**



## Web shopping



Did you know you can now place orders for brochures, Somerset County maple syrup, books

and other merchandise online?

The Chamber's new website, launched earlier this year, now offers visitors the ability to place orders online for a variety of items, including:

- Somerset County maple syrup;
- America's County® items;
- a variety of Somerset County books;
- Great Allegheny Passage merchandise;
- postcards;
- select Somerset County-related brochures;
- relocation packets and more.

Visit [somersetcountychamber.com/our-store](http://somersetcountychamber.com/our-store) to start your shopping experience now. Don't want to wait for it to arrive by mail? Visit the Chamber to purchase or pick up the same items yourself.

## Thank You to the 2018 Mixer Hosts

Being able to connect with other businesses is one of the many perks by being a Chamber member, and we would be remiss if we didn't thank those companies and organizations that opened their doors to host or sponsor Chamber mixers in 2018.

*Boyer Financial Planning  
Indian Lake Marina  
Citizens Neighborhood Bank  
Tailgatez  
Laurel Arts  
Interim HealthCare of Somerset  
Fairfield Inn & Suites  
Uptown Works  
Sugar Grove Antiques*

If you'd like to host a mixer in 2019 please call the Chamber or email [asvonavec@somersetcountychamber.com](mailto:asvonavec@somersetcountychamber.com)

## Participate in the MegaShow

- Promote your business to more than 2,000 potential customers
- Variety of booth sizes to meet your needs
- Convenient parking, loading and unloading areas
- Opening night networking and social event
- Thousands of dollars invested in advertising and promotion
- Sponsorship opportunities available
- Food booths
- Prize drawings and giveaways
- Kids' activities and more

### Instructions on accepting Local Loot

*Business owners and managers, with the holiday season approaching, be sure your employees know how to accept Chamber Local Loot gift certificates.*

1. Check the expiration date before accepting any gift certificate. **Local Loot** checks are good for ONE YEAR from the date of issue listed on the check. Any expired checks accepted by a business will not be redeemed.
2. **Local Loot** should be deposited into your daily deposit, just like a regular check. You will receive 100 percent of the face value of the check.
3. We suggest that change NOT be given unless at least 80 percent of the value of the check will be used during the transaction. **Local Loot** gift certificates should not be redeemed for cash.

*For additional information, contact the Somerset County Chamber of Commerce at (814) 445-6431 or [info@somersetcountychamber.com](mailto:info@somersetcountychamber.com).*

# Local Loot



Treat your sweetheart to something special this year by giving

**Local Loot**

gift certificates, available in \$5, \$10 and \$25 increments.

With more than 50 area businesses participating in the program you are sure to find something they'll love.

**Local Loot** is available at the Chamber office, 601 N. Center Ave., Somerset. Call (814) 445-6431 or email [info@somersetcountychamber.com](mailto:info@somersetcountychamber.com) for details.

## Member-2-Member Discounts



### Indian Lake Marina (814) 754-4975

Chamber members and their employees can receive 20% off boat rentals Monday-Thursday and 10% Friday-Sunday with this coupon. Excludes holidays.  
info@indianlakemarina.com

### Duppstadt's Country Store (814) 754-4400

Take \$10 off the purchase of clearance boots from the upstairs shop with coupon.

### A-1 Garage Doors & Openers (814) 443-1413

We sell the best and service the rest. Amarr Garage Doors, LiftMaster openers, residential and commercial, sales-service-installation. 10% discount for Chamber members on garage doors and openers.

### SAJ Publishing (814) 445-9695

SAJ Publishing is offering a 20% discount to Chamber members on the following books: "Courage After the Crash" and "Quiet Courage" by local author Glen J. Kashurba, M.D. Royalties for "Quiet Courage" donated to the Flight 93 National Memorial. Visit our website, www.sajpublishing.com, or contact Mary for more information.

### Duppstadt's Country Store (814) 754-4400

Receive 10% off Fiesta Ware table settings with coupon (lowest price).

### ADVERTISE HERE!

Call (814) 445-6431.

### Ophthalmic Associates

(814) 445-3730

Purchase 1 pair of prescription eyeglasses and get half off a pair of prescription sunglasses. Cannot combine discount with insurance programs.

### Security One LLC (814) 629-9614

All Chamber members receive a 10% discount off installation of security systems.

### Kashurba Web Design Group, LLC (814) 279-8507

20% discount on custom websites and website redesigns for Chamber members, plus FREE domain registration and web hosting for the first year!

### Bittner Vending, Inc. 800-869-7521

First order of 5 gallon spring water free with cooler rental. Offer good for new customers only.

### Alluring Edge Hair & Nail Salon (814) 701-2883

20% off any one service to new clients who are Chamber members.

### Damin Printing Company LLC (814) 615-9138

10% discount offered to any new customer on their first embroidered or printed clothing order. Email jason@daminprinting.com to schedule an appointment at your place of business.

### RPM Signs (814) 288-1561

10% off your next purchase of promotional products. Visit

minahansigns.com/promotional\_items to view our full line.

## Available Commercial Space

### BERKSHIRE HATHAWAY HOMESERVICES 800-419-7653

#### Sherman's Ice Cream Parlor 450 Latrobe Ave., Confluence

Fully equipped with U-shaped bar, coolers, grill and fryers and fridge and freezer. Upstairs is a renovated 2-bedroom apartment with appliances and washer and dryer. Visit LaurelHighlandsLiving.com for more information and photos.  
\$174,500

Contact Robert "Wags" Wagner at (412) 551-1859.

### Westridge Properties, Inc. (814) 445-4578/(814) 442-7878

#### For Rent

#### Westridge Building, Route 31 West, Somerset

2 office suites, each 4 rooms. 1 approximately 1,000 sq. ft. 1 approximately 800 sq. ft. 1 office suite, 2 rooms. Approximately 450 sq. ft.

#### Northridge Building 1590 N. Center Ave., Somerset

2 areas, approximately 1,300 and 2,000 sq. ft. Several smaller offices.

#### Law & Finance Building, 133 W. Main St., Somerset

First floor – approximately 3,300 sq. ft.  
Second floor – approximately 1,600 sq. ft.

Will remodel as needed.

All available at very favorable lease terms.

### RMB Realty (814) 444-9400

#### 520 Acres Industrial Land

Route 281 near Route 219 interchange. Public sewer on site. Public water available. State designated Keystone Opportunity Zone. Some infrastructure in place. 3,900 ft. frontage on PA Turnpike.

\$2,000,000

Contact: Mike Boland

#### 1986 N. Center Ave., Somerset

Commercial building on a 5.6-acre parcel. 9,000 sq. ft. on 2 floors. Adjacent to Kenny Ross Chevrolet. Ideal for equipment sales/service. Includes loading dock and 2 at-grade overhead garage doors.

\$335,000

Contact: Mike Boland

## Advertise your commercial property in this section for free!

Call (814) 445-6431 for details.

### RE/MAX PREMIER, REALTORS (814) 445-4748

#### 564 Stoystown Rd., Somerset

Versatile brick commercial building conveniently location near Rt. 219. Could be used as retail or distribution. Building area is 3,700 sq. ft. with 3 garage doors and separate loading dock. The front of the building has a receiving area with large glass windows and offices. Excess land behind building for expansion. Service, automotive, warehouse, retail, or other commercial uses.

\$169,000

#### 917 W. Main St., Somerset

OFFICE COMPLEX of 4 units, all with separate utilities. Off-street parking for 46 cars. Lower level has a common waiting room with restrooms and all units have restrooms for staff. Units range from 1450 sq. ft. to 1800 sq. ft. and common walls could be moved to enlarge a specific unit. Central air throughout. Large lot with nicely landscaped lawn.

\$260,000

#### 13 & 15 First St., Cairnbrook

Personal Care home approximately 20 years old but has never been occupied. There are 13 private rooms - 10 have private full baths, 3 have a 1/2 bath, and 1 has a handicap accessible bath. Kitchen and dining area to serve all residents, in-house laundry, meeting room, and visitors lobby. There is a separate house on site for staff housing and offices. Paved parking. Sitting vacant for many years, this home will need some repairs. The current owner was planning an Alzheimer's Care Facility. Possible apartments or treatment center.

\$325,000

### Office Space For Rent (814) 444-9070

#### Office space for rent

1,100 sq. ft. space for rent at Suite 109 in the Georgian Place, Somerset.  
For more information, call (814) 444-9070.

### Office Space Available (814) 443-4477

#### Commercial office space available

Lovely renovated historic building steps from the courthouse. 214 E. Union St., Somerset. Law office of Marci L. Miller.  
Call (814) 443-4477 for more information.

## The Chamber Classifieds

### KASHURBA WEB DESIGN GROUP LLC

Offering professional website redesign services. Our websites are custom designed, optimized to show up on Google, affordable to maintain and easy to update! We also build business Facebook pages and provide Internet marketing services. We've been building websites in Somerset for over six years. Our office is located on South Center Avenue in Somerset.  
113 S. Center Ave., Somerset  
(814) 279-8507  
kashurbawebdesign.com  
email: joe@kashurbawebdesign.com

### SCOTT C. ASH VISUAL COMMUNICATIONS

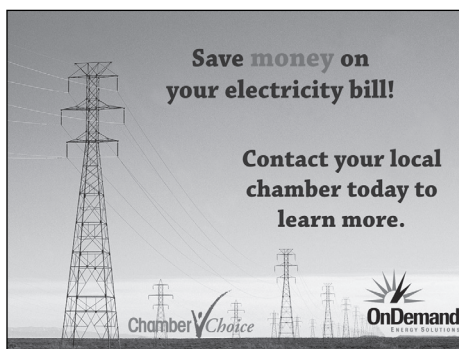
Providing marketing communications, graphic design, website development, digital media production services. Offering tradeshow displays, printing, signage design and products. Over 25 years of communications excellence.  
115 N. Edgewood Ave., Somerset  
(814) 443-0592  
www.myvisualcomm.com  
email: scottash11@gmail.com

### ADVERTISE HERE!

Looking for a new way to showcase your business or organization? Advertise your products and services through the ChamberClassifieds. Reach more than 1,000 potential customers through the Chamber's newsletter. Call (814) 445-6431 to learn more.

Save money on  
your electricity bill!

Contact your local  
chamber today to  
learn more.





# Available Commercial Space

## Berkshire Hathaway Home Services The Preferred Realty (814) 443-4858

### 398 W. Patriot St., Somerset

Large 2,577 sq. ft. brick building located in the heart of Somerset. Currently operating as an antique store. Includes 2-car garage, off-street parking and apartment on 2nd floor with large deck. Abundance of possibilities.  
\$69,500

Contact: Ken Halverson

### 374 West Main Street, Somerset

Approx. 32,000 sq. ft. commercial property with high visibility and endless possibilities. Currently housing numerous tenants with different businesses as well as an apartment space. Includes 20 off street parking spaces.  
\$359,000

Contact: Ken Halverson

### 1936 Stoystown Road, Friedens

34,514 sq. ft. brick building has 14 large rooms, large cafeteria, commercial kitchen including stainless steel equipment, gymnasium, office spaces and loading dock. Previously Friedens Elementary School.  
\$297,000

Contact: Ken Halverson

### 821 W. Main St., Somerset

Well-maintained large brick building has office space on the main floor and basement. Includes 7 offices, conference rooms, 2 restrooms, kitchen and a 2-bedroom apartment. Paved parking in front and rear including 2 garage bays. High-traffic area along Main Street.  
\$159,500

Contact: Ken Halverson

### 105 E. Main St., Somerset

Turn-key business opportunity in the heart of Somerset! This restaurant is well recognized around town with additional dining room on 2nd floor as well as outdoor dining. Third floor apartment. All restaurant equipment included.  
\$239,000

Contact: Ken Halverson

### 339 W. Union St., Somerset

Well located away from the hustle and bustle, this 1-story office building stands tall regarding past history, present availability and future possible uses! Good visibility, layout and fenestration and its condition is move-in ready. Includes some off-street parking.  
\$175,000

Contact: Rita Halverson

## Commercial Space Available (814) 233-1434

### Office and warehouse rental space

1120 Miller Picking Road, Davidsville. Located off Route 403 and close to U.S. 219 interchange. Includes front entrance with receptionist area, conference room, kitchenette, office space, employee lounge, restrooms and warehouse. Receiving bay with garage door. 18,010 sq. ft. with 2 overhead doors with operators. 3 roof mounted heat and AC. 3 Phase power. Available for lease February 1, 2018.

### Land available

7.49 acres at 1120 Miller Picking Road, Davidsville. Great industrial commercial site off Route 403 and close to U.S. 219 interchange. Public sewage and public water.

## Howard Hanna Geary Real Estate (814) 445-6587

### Stoystown Road, Friedens

#2507C Endless possibilities exist with this commercial listing. Includes a steel building with 18-20 ft. ceilings and 20,000 sq. ft. Also over 100 undeveloped acres. Excellent location, close to the PA Turnpike, Route 219 and other major roads.  
\$950,000  
Call Bernice Lape.

### Lincoln Highway, Stoystown

#2505C Ready for you to start a new business. Very clean 6,000+ sq. ft. former auto body shop. 334 ft. of frontage along Lincoln Highway with an average 6,800 vehicles per day. Only a third-mile from Route 219-Lincoln Highway interchange.  
\$239,000  
Call Sue Koontz.

### Somerset Pike, Boswell

Parking for 75+ cars, restaurant seating capacity of 230, bar seating of 30+. Banquet facilities, private rooms for larger parties.  
\$224,500  
Call Joe Geary.

### Business Opportunity

The current owners created and opened the doors 19 years ago and they'd like to pass this successful business opportunity on to someone else. Top floor has 3-bedroom apartment.  
\$169,000  
Call Bernice Lape.

### Confluence B&B

Confluence House Bed and Breakfast has been welcoming guests for over 14 years. The house has 5 well-appointed guest/bedrooms and 4 bathrooms, living room, separate dining room, breakfast room, commercial-grade kitchen and detached garage with additional finished space. The home is being offered fully furnished, including indoor and outdoor furniture, appliances, artwork, dishes, linens, inventory and more. Choose to use this as a turn-key B&B or as a private resident. Start enjoying all that Confluence and the surrounding area has to offer.  
Offered at \$384,000  
Call Sue Koontz.

### Stoystown Road, Somerset

#2520M A 4-unit apartment building along with a mobile home pad. Good rental history. All units rented except one that is currently being renovated. Mobile home pad also rented. Public sewage, well water on 2.296 acres.  
\$124,000  
Call Connie Weyant.

## Indian Lake Resort & Banquet Center (814) 701-8877

### For sale/lease

Indian Lake Resort & Banquet Center. Includes bar/lounge, dining room, banquet center and 32 guest rooms.  
Contact (814) 701-8877 or tlstclair@yahoo.com.

## Commercial Space Available (814) 443-1354/(814) 754-8272

### Commercial showroom for rent

750 N. Center Ave., Somerset. High-volume traffic next to Maggie Mae's. Formerly Elite Kitchen and Bath.

## Angelitto Passaniti (814) 445-7019

### For Rent

860 sq. ft. on main floor at 118 W. Main St., uptown Somerset. Includes off-street parking.



## 2019 membership update forms, dues

Be on the lookout for 2019 Chamber membership update forms. Members will receive update forms for both their directory/website listing information and basic member information. ***This will be the only notice you receive*** to update your membership information for both the 2019 member directory publication and the Chamber's online membership directory.

Invoices for 2019 membership dues were mailed in October, if you have not yet returned please do so as soon as possible. Monthly and quarterly payment options are available, as is EZ Pay.

## Website hits for November 2018

Total new visitors: 2,182  
Total pages viewed: 12,132

Home: 1,749  
Calendar: 1,089  
Member Directory: 568  
Tourism: 384  
About: 166  
Contact: 154

## Social media likes and followers

Facebook: 2,545

Twitter: 1,267

Pinterest: avg 400

LinkedIn: 258

## Somerset County Chamber of Commerce

601 N. Center Avenue, Somerset, PA 15501  
(814) 445-6431 FAX (814) 443-4313  
E-mail: [info@somersetcountychamber.com](mailto:info@somersetcountychamber.com)  
Website: [www.somersetcountychamber.com](http://www.somersetcountychamber.com)

**ADDRESS SERVICE REQUESTED**

KEEP OUR ECONOMY STRONG!

# Think Local

BEFORE YOU BUY  
SOMERSET COUNTY CHAMBER OF COMMERCE

**Keep Us Updated! Fax, Mail, or  
E-mail Address Changes Today.**



STD. PRSRT.  
U.S. POSTAGE  
**PAID**  
SOMERSET, PA 15501  
PERMIT NO. 76



## Somerset County Chamber of Commerce 2019 Officers and Board of Directors

*President*..... Shawn Kaufman, Riggs, Industries  
*Vice President* ..... Dave Redick, CVS Health  
*Secretary*..... Lladel Lichty, United Way of the Laurel Highlands  
*Treasurer* ..... Danni Conn, Beggs Brothers Printing, LTD

Mark Bower, *Past President*  
Rockwood Area School District

Lisa Bittner  
Somerset Trust Company

Mike Boland  
RMB Realty

Scott Hollern  
Hollern & Koontz  
Insurance Agency

Tom Lear  
Fairfield Inn & Suites

Chris Plummer  
Seven Springs Mountain Resort

Chris Robbins  
Fike, Cascio & Boose

Andy Rush  
Somerset Hospital

Mikel Vaughn  
AK Coal Resources

Gerald Walker  
Somerset Co. Commissioner

Fred Will  
Sugar Grove Antiques

David Yahner  
The EADS Group Inc.

## Chamber Office Staff

*Executive Director*..... Ron Aldom  
[raldom@somersetcountychamber.com](mailto:raldom@somersetcountychamber.com)

*Office Manager* ..... Sandy Berkebile  
[sandyb@somersetcountychamber.com](mailto:sandyb@somersetcountychamber.com)

*Marketing & Communication*..... Acacia Svonavec  
[asvonavec@somersetcountychamber.com](mailto:asvonavec@somersetcountychamber.com)

## Upcoming Chamber events

**January 4**      **Winter Kickoff 2019 at Seven Springs**  
**February 7**      **Laurel View Village Mixer**

## 2019 Chamber of Commerce Office Hours

**Monday - Friday  
8 a.m. - 4 p.m.**



Make sure you get your copy of the  
2019 Festivals and Events Brochure. Email  
[asvonavec@somersetcountychamber.com](mailto:asvonavec@somersetcountychamber.com)  
to request a copy

**The Somerset County Chamber of Commerce Accepts  
These Major Credit Cards:**

