

# CHAMBER CONNECTION

## Somerset County Chamber of Commerce

NEW MEMBERS

WINTER EDITION 2021

Page 4

## LEADERSHIP



The Somerset County Chamber of Commerce is proud to present the newest Leadership Somerset County class. This class officially kicked off in September and continues to meet on a monthly basis to learn about the county and all that is offered and to help facilitate growth in their leadership abilities. Pictured (L to R): **Front Row: Ron Aldom**, Kayla L. Johnston, Tourism Counselor, Somerset County Chamber of Commerce; **Brandy M. Ringler**, Regional Marketing Coordinator, Somerset Trust Company; **Brianna L. Rainey**, Account Manager, NFP; **Kathryn L. Billy**, Sr. Customer Service Rep., Somerset Trust Company; **Ryan M. Lynch**, Cost Accountant, Global, Inc.; **Andrea Palmar**, Human Resources, Memorial Highway Chevrolet; **Back Row: Seth J. Dora**, Logistics Supervisor, CVS Health; **Stephen A. Seth**, Registered Landscape Architect, The EADS Group; **Katie A. Biller**, Human Resources Generalist, Seven Springs Mountain Resort, Inc.; **Michael P. Villeneuve**, Director of Transportation, Tableland Services, Inc.; **Renold M. Sossong**, Assistant General Counsel, Somerset Trust Company; **Jonathan A. Webster**, Electrical Engineer, Drive DeVilbiss Healthcare

## Winter Kickoff

The Winter Kickoff will once again be held at Seven Springs Mountain Resort on January 7th in partnership with other Pennsylvania chambers and the Pittsburgh Business Exchange. Please check emails from the chamber to purchase your tickets for this exclusive membership opportunity.

## Celebrate the Night

The Somerset County Chamber of Commerce's annual dinner has been overhauled and will be a themed Mardi Gras reception for all members. Mark your calendars for Wednesday, March 9th at Oakhurst Grille and Event Center. Start planning your costume and decorating your mask for this fun night out. More details will be shared as we get closer to the event.



## Support Local Business by purchasing **Local Loot**.

Available in \$5, \$10, & \$25 increments

**Local Loot** is accepted all around the county.

To purchase stop by the Somerset County Chamber office at 601 North Center Avenue, Somerset or call us at: 445-6431. What makes Local Loot even better is that the businesses treat it just like cash, so there are no hassles in redeeming it.

The special part of the **Local Loot** Program is that it keeps the money local, which helps the local economy grow and that provides jobs for local people. Any business can become a **Local Loot** participant by simply becoming a chamber member and enrolling in the program.

Participating businesses can be found on the website or stop in for a brochure.





## Ribbon Cuttings

### Berkebile Kennels



### Taco Bell



The Chamber advertises regionally to promote Somerset County tourism. Check out this upcoming ad that will be featured in an Ohio recreation magazine with an article about winter activities in Somerset County.

## IMAGINE...

By Ron Aldom,  
Executive Director, Somerset County Chamber of  
Commerce

IMAGINE...



Ron Aldom

*Imagine an organization that would address the issues facing our local businesses and be a voice for them...*

*Imagine an organization whose soul purpose was to improve the business climate and improve the quality of life for county residents...*

*Imagine an organization that promoted and marketed the county to others that would increase sales and profits to local businesses...*

*Imagine an organization that acted as a liaison between businesses and all levels of government...*

*Imagine an organization that worked with school districts to highlight successful careers in the local region, thus helping students find great local careers, while helping fill our skilled workforce shortage...*

*Imagine an organization that offered a Leadership program to help nurture new community and business leaders for the future...*

*Imagine an organization that creates events that allow business and community leaders to network and help support buying local...*

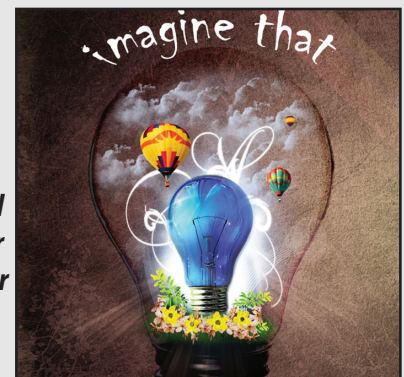
*Imagine an organization that provides various levels of media to help promote, communicate with and educate its members 24/7...*

*Imagine an organization that is professionally staffed and lead by a board of directors that are recognized business and community leaders in the county...*

*Imagine an organization that works cooperatively with other local, regional and national partners on projects that having a lasting, positive effect on the county...*

*Imagine an organization that has been around for over 100 years and is still an active partner in the success of Somerset County...*

**No need to imagine it. The Somerset County Chamber of Commerce is that organization and has been actively doing all of that and more. Your membership and other support makes it all possible.**



## Upcoming Festivals

### **Fire and Ice**

January 14 -16, 2022  
Uptown Somerset  
(814) 443-1748  
somersetinc.org

The Fire & Ice theme for 2022 is Winter Carnival! Just imagine feeling that child-like joy as you walk uptown admiring carnival-themed ice sculptures, playing carnival games at the Kids Center, sliding down a custom ice slide, standing in amazement as fireworks light up the night sky, stopping at a bonfire to keep you warm, shopping local at a small business or the crafter and artisan market, and delighting in delicious food from uptown restaurants and food vendors lining the street. That's only the beginning!

## Golf Bash 2022

*Join us for the 2022 Golf Bash at the Bakersville Fire Hall on Saturday, June 25th, 2022. Tickets will go on sale beginning in March. Check the Chamber's social media for updates and when to purchase your ticket loaded with prizes, trips, and snag some awesome coupons for the 2022 golf season.*



*Join the Chamber in December and have your membership paid in full through Dec. 31, 2022. The \$15 one-time initiation fee will also be waived, and monthly or quarterly payment options are available.*

*The sooner you join, the more you save!  
Contact the Chamber for details.*

## CHAMBER AWARDS

*Each year, the Chamber recognizes individuals who have made an outstanding contribution to our community. We are currently accepting nominations for this year's awards in the following categories:*

### **Outstanding Person of the Year Award**

Giving of oneself for the betterment of others has a profound effect on everyone and creates an atmosphere of giving and understanding, which are key to a growing community. Presented annually to a Somerset County resident(s) in recognition of outstanding accomplishments that had a profound positive effect on Somerset County. The recipient(s) may be recognized for volunteer efforts, although it may also recognize people who have gone above and beyond in their profession and whose tireless efforts truly made a difference. In all cases, this award highlights the leadership and tireless efforts of the award winner.

### **Grant B. Miller Award**

Given in memory of Grant B. Miller, a former director and dedicated volunteer of the Chamber. The selection is based upon any accomplishment within a business or profession, if it had a direct effect and benefit to the area or it may be based upon any accomplishments beneficial to the area and its residents. Although the award is presented to a member of the Chamber, their accomplishments need not have come while working for the organization or within its framework.

### **The Betty Haupt Memorial Tourism Award**

Awarded in memory of Betty Haupt, former director of the Somerset Historical Center, and a former member of the Chamber's Tourism Committee. It is given to a county resident, organization or business that has made a significant effort to further hospitality/tourism in Somerset County. This also includes efforts in attracting and welcoming new residents to our county and showcasing this county as a wonderful location to live, work, play and have a business.

### **Harold W. Wheeler, Jr. Memorial Humanitarian Award**

The backbone of every county is those who give unselfishly of themselves to improve the lives of others. Presented annually to an individual, business or organization to honor their humanitarian efforts in helping someone in need and how they went "above and beyond" in their efforts. It can be awarded for efforts locally, nationally, or internationally.

The award is named in honor of Harold W. Wheeler,

Jr. who was a local business owner, benefactor, and humanitarian, who left behind a legacy of philanthropy and goodwill in Somerset County and the region.

### **Somerset County Ag-Business Award**

Presented annually to a grower, farmer, producer, or ag-related business who has played a significant role in branding and promoting Somerset County agricultural products in the region and beyond. Their efforts have helped highlight the value of "Buy Local, Buy Somerset County."

### **Entrepreneur of the Year**

Presented to a first-time entrepreneur(s) who has launched a consumer-focused business in Somerset County. The business can be making a physical product, operating a retail business, providing a service or anything that constitutes a business, but must be focused on the consumer. Special consideration is given to businesses that created additional jobs, because of their business.

### **Somerset County Young Gun Award**

As our county progresses, it is essential that we retain and attract our youth to fill leadership roles in businesses, organizations, and our communities. This award highlights an individual under the age of 40 who has made a significant impact on his or her profession or career while making an equal impact on the community and non-profit organizations around the county through his or her volunteer time and leadership skills.

### **Workforce Education Star**

Presented to an individual or an organization who has made a significant impact on connecting students to career opportunities while also making an impact on providing skilled workers to local businesses. The award is open to educators and business representatives, and winners are chosen by the Chamber's Success in Somerset County Committee.

### **Ambassador of the Year Award**

This award is given to the person that best exemplifies the mission of the chamber. The criteria for the award are based on the amount of volunteer time given to the Chamber during events and by committee participation. There is also a strong emphasis on the recruitment of new members and the retention of existing members. The person has a strong understanding of the benefits of chamber membership and realizes the importance of the chamber in the community.

*Nomination forms are available on the Chamber's website or at the Chamber office. All nominations must be received by December 10th.*





# New Members

## Anderson Equipment

Dylan Fowler, Product Support Branch Manager  
Judy Anderson, President  
436 Riggs Road  
Somerset, PA 15501  
814-443-2867  
dfowler@andersonequip.com  
andersonequip.com

## API Wash & Dry

Chuck Modrak, Manager  
402 Main Street  
Rockwood, PA 15557  
814-926-2088  
chuck@apicancleanit.com

## Hillegas Sugar Camp

Kyle Hillegas, Owner  
455 Dividing Ridge Road  
Fairhope, PA 15538  
814-233-5843  
hillegassugarcamp@gmail.com  
hillegassugarcamp.com

## Patriot Park Foundation

Randy Musser, President  
6150 Lincoln Highway  
Stoystown, PA 15563  
814-233-0351  
patriotparkfoundation@gmail.com  
patriotparkfoundation.org  
Patriot Park Foundation is a 501 c3 non-profit corporation. Its purpose is to plan and build a Global War on Terrorism Memorial at it's location, within the Flight 93 National Memorial.  
The first phase, The Field of Heroes Flag Display, opened this summer on September 3rd, 2021. The park has been visited by thousands since that time. The park which contains 7052 flags, one for each serviceman or woman who has died in the GWOT, is a moving tribute to the sacrifice made to protect our freedom.  
Hours of operation are 9 a.m. to dusk, 7 days per week. The park is now closed and will reopen in the spring.

## Stanczyk Properties LLC

Stephanie Jano, Real Estate Secretary  
Martin L. Stanczyk, President  
109 Main Street  
Grantsville, MD 21536  
301-895-8064  
stanczykproperties@gmail.com

## Tammy's Traveling Notary Services

Tammy Gennett, Owner/Notary  
4840 Penn Avenue  
Boswell, PA 15531  
814-629-9029  
tammyjeann@comcast.net  
tammystravelingnotaryservices.com

## Teeter Group

April Ressler, President  
1400 Eisenhower Boulevard, Suite 102  
Johnstown, PA 15904  
814-944-5900  
aressler@teetergroup.com  
teetergroup.com

## Windber Area Centennial Lion's Club

Jackie Reed, Treasurer  
52102 Graham Avenue  
Windber, PA 15963  
814-418-0241  
sreed1963@hotmail.com

## Friend of the Chamber

Ken Whitesell

## Member Spotlight - Musser Engineering, Inc.

**Business:** Musser Engineering, Inc.

**Owners/Managers:** Terry Schmidt, P.E., President & Ronald Musser, P.G., Vice President

**Address:** 7785 Lincoln Highway, Central City, PA 15926

**Phone:** (814) 754-8477

**Website:** www.musserengineering.com

**Hours of operation:** 7 a.m. to 4:30 p.m.

**Year the business joined the Chamber:** 1984

**What does the business do?** Multi-disciplined engineering and consulting firm that provides surveying, engineering design, permitting and environmental services.

**How did the business begin?** Founders Randy and Linda Musser started the business out of their basement in 1982. Our recent affiliation with EARTHRES has allowed us to diversify and add more services to further assist our clients.

**Why is being a Chamber member important?** The Chamber keeps us informed about issues that impact our company, while also providing opportunities to network and interact with other local businesses.

**Did you know?** We have PA certified nutrient and odor management team members who work with local and regional agricultural clients to help make their concentrated animal feeding operations compliant with state standards.

**Want to see your business or organization featured here? Email** [info@somersetcountychamber.com](mailto:info@somersetcountychamber.com).

**Members are featured on a first-come, first-serve basis.**



*Pictured: Musser Engineering, Inc  
1984 vs Present Day*

## Event, Festival, and Fair Organizers

The Somerset County Chamber of Commerce is updating the Festivals & Events Brochure for 2022. We print 15,000 brochures of these popular brochures that are distributed throughout the year to area hotels and restaurants, in various Chamber information packets, at various Chamber events and to anyone requesting festival information from our website or through the Chamber office.

We also insert the brochure in our quarterly rack through the Laurel Highlands Visitors Bureau beginning in August right before the festival season. The brochure also includes a QR Code that links to the tourism section of our website. This section includes all types of information on Somerset County tourism sites, plus it links to the Calendar of Events and Fairs & Festivals listed in the directory.

The cost to participate in the brochure is \$100.00 per festival/event. The festival/event or the organization sponsoring the event, must also be a current member of the Somerset County Chamber of Commerce. If you wish to participate, please contact the Chamber before December 10<sup>th</sup>, 2021.

If you have any questions, please contact the Chamber office.



The Somerset County Chamber of Commerce will hold its annual college and technical fair on April 5th from 9 a.m. to noon at the Somerset County Technology Center, Somerset PA.

This college fair is a unique opportunity for students and their parents to meet college admission personnel face-to-face and begin the process of showing colleges an interest in attending.

Representatives from a variety of colleges, trade schools, technical institutions, business schools, nursing programs, and the military will be available to discuss opportunities for students. College representatives will be able to answer questions about admissions, courses of study, degree programs, college life, and financial aid.

In order for students and families to gain the most out of this free event it's encouraged to research colleges or technical schools that are of interest, make notes of questions or discussion items to speak with a representative about, and put together a small information packet about yourself (GPA, test scores, honors classes, activities, and volunteer work).

The fair will again include an employer career panel featuring representatives from a variety of vocations ready to answer questions about their jobs, training, opportunities, and other related topics. Students speaking with these experts from different occupations can benefit by making more informed decisions regarding the career pathway they choose.

A full list of participating schools and organizations will be available on the Chamber's website closer to the date of the College & Technical Fair.

## Local Loot

Take care of everyone on your shopping list by giving **Local Loot** gift certificates, available in \$5, \$10 and \$25 increments.

For more information or to register your business to participate in the **Local Loot** program, contact the Somerset County Chamber of Commerce at (814) 445-6431.

**On sale now at the Somerset  
County Chamber of Commerce**

### Instructions on accepting

## Local Loot

Business owners and managers - be sure your employees know how to accept Chamber Local Loot gift certificates.

1. Check the expiration date before accepting any gift certificate. Local Loot checks are good for ONE YEAR from the date of issue listed on the check. Any expired checks accepted by a business will not be redeemed.
2. Local Loot should be deposited into your daily deposit, just like a regular check. You will receive 100 percent of the face value of the check.
3. We suggest that change NOT be given unless at least 80 percent of the value of the check will be used during the transaction. Local Loot gift certificates should not be redeemed for cash.

For additional information, contact the Somerset County Chamber of Commerce at (814) 445-6431 or [info@somersetcountychamber.com](mailto:info@somersetcountychamber.com).

## CFA Opens Scholarship Application

Community Foundation for the Alleghenies (CFA) has made more than 280 scholarship opportunities available to students in Cambria, Somerset, Bedford, and Indiana counties. This year, in addition to tools to make it easier than ever for students to find and apply for scholarships, the Foundation has changed scholarship season to October to February, instead of offering a two-month spring window for applications.

The idea is to give students more time to apply, including during holiday breaks, and more time to discover the variety of opportunities available: all types of awards for all types of students.

Last year, CFA launched a new application portal to help students

apply for multiple scholarships at CFA's website, and the site's new Eligibility Quiz helps match them to the most ideal opportunities. Students will be prompted to take the quiz when they log in or create an account at [cfalleghenies.org/scholarships](http://cfalleghenies.org/scholarships).

The web page also includes a directory of scholarships by county and school district.

"We are happy to be able to help students find scholarships that are the right fit for their background and their goals," CFA President Mike Kane said. "It's important to us and to our donors that no scholarship dollars are left on the table, so our staff has worked hard to connect students with the financial assistance they need."

Scholarships are available for students enrolled in or headed to a college, university, or trade school.

The Community Foundation for the Alleghenies also is an approved PATH Partner through the Pennsylvania Higher Education Assistance Agency (PHEAA). Students who receive scholarships from approved PATH partners, such as the Community Foundation and will attend college in Pennsylvania may be eligible to receive additional scholarship funds from the PATH program.

More information, including answers to frequently asked questions, is available at [cfalleghenies.org/scholarships](http://cfalleghenies.org/scholarships).

## Laurel Highlands Named Readers' Choice Winner

USA Today announced that Pennsylvania's Laurel Highlands has been named a Readers' Choice Winner for the Best Destination for Fall Foliage category in the 2021 USA Today 10 Best Travel Award Contest.

"We are extremely honored to have been nominated for a second year and recognized as a Top 10 destination by readers of USA Today," said Ann Nemanic, Executive Director of GO Laurel Highlands. "Each season in the Laurel Highlands bears its own unique charm. When autumn unfurls a magnificent blanket of color along our rolling hills, through our valleys, and atop our vistas, it's a sight everyone in America needs to see."

The Laurel Highlands placed eighth overall in voting amid a field of 20 nominees that included Vermont's White Mountains, Pennsylvania's Pocono Mountains, Gatlinburg, Tennessee, and the Ozark Mountain Region.

Winners were selected by readers' choice via a month-long online contest that encouraged travelers to vote daily for their favorite place to explore for fall.

The Best Destination for Fall Foliage award is one of several USA Today 10 Best honors recently won by the Laurel Highlands. The region previously won

third overall for Best Fall Foliage in 2020, one of the top Best New Destinations in 2018 for Flight 93 National Memorial's Tower of Voices, and Best Pennsylvania Attractions for Ohiopyle State Park

10Best.com provides users with original, unbiased, and experiential travel content of top attractions, things to see and do, and restaurants for top destinations in the U.S. and around the world. Their staff is made up of a collection of local travel experts that specialize in the region or city they write about.

As home to thousands of acres of unspoiled state forests, parks, and game lands, the Laurel Highlands is the

ideal destination for an autumn getaway for leaf peepers. The mountain ridges and river valleys provide a dramatic landscape for the diverse population of trees that offer their own signature color each fall. Eager leaf peepers are always anxious to take their first fall hike or drive of the season and curious to know when the leaves will start changing. While Mother Nature is not always predictable, fall foliage begins to shine in mid-September with the brightest bursts of color ablaze in mid-October.

For more information or inspiration, please visit [www.golaurelhighlands.com/fall](http://www.golaurelhighlands.com/fall).



## 2022 membership update forms and dues

Be on the lookout for 2022 Chamber membership update forms. Members will receive update forms for both their directory/website listing information and basic member information. ***This will be the only notice you receive*** to update your membership information for both the 2022 member directory publication and the Chamber's online membership directory.

Invoices for 2022 membership dues will be mailed in December. Monthly and quarterly payment options are available, as is EZ Pay.



# Available Commercial Space

**Berkshire Hathaway Home Services**  
**The Preferred Realty**  
**(814) 443-4858**

## **313 Plank Road, Somerset**

Highly visible Shopping Plaza located at the edge of Somerset. The massive 76,000 Sq. Ft. building could take on any number of potential uses from Retail-Restaurant to Recreational Endeavors. Plenty of parking with this well-lit lot. Entire property is for sale or individual spaces can be leased.

**\$1,999,000**

Call or Text Lee Hoffman, 814-279-1733.

## **107 W Patriot Street Somerset**

This beautiful Queen Anne's Style Victorian home features a conical tower with great views of Somerset. The home has 7 bedrooms & 5 bathrooms along with 3 kitchen areas. Property could be returned to personal residence, B&B, event center, or whatever you can dream!

**\$129,900**

Call or Text Lee Hoffman, 814-279-1733.

## **508 Alpine Rd, Boswell**

Banquet Hall Lodge At Laurel Mtn. This 8000 Sq Ft Space Features Bar & Kitchen Area, Locker Rooms, Inground Pool, & Sports Courts. 11.36 Acres With 10 Buildable Lots. Public Water, Sewer, & Gas.

**\$675,000**

Call or Text Lee Hoffman, 814-279-1733.

## **456 W Main St Somerset**

Beautifully Appointed 4 Bedroom 2 Bathroom Brick Home w/ 3 Unit Apartment Building To The Rear. Additional Commercial Business Space & Large Garages. 3/4 Acre Lot With Lots Of Parking.

**\$330,000**

Call or Text Lee Hoffman, 814-279-1733.

## **366 E Main St Somerset**

10,304 Concrete Block Building with Garage/ Workshop & Showroom Areas. Spacious 3 Bedroom 1 Bathroom Apartment On 2nd Floor.

**\$162,000.**

Call or Text Lee Hoffman, 814-279-1733.

## **105 W Church St.**

For Lease Office/ Medical. 1,652 Sq Ft Includes Waiting Room, Exam Rooms, & Offices.

**\$1,400 Per Month**

Call or Text Lee Hoffman, 814-279-1733.

## **453 W Patriot**

For Lease Office Space. 727 Sq Ft Includes Waiting Room, Office, Restroom.

**\$800 Per Month**

Call or Text Lee Hoffman, 814-279-1733.

**Berkshire Hathaway Home Services**  
**The Preferred Realty**  
**724-593-6195**

## **1519 N Center Avenue, Somerset**

B&B perfect location for a number of retail opportunities. 9BR, 7.5BA, built in 1918. Owners have a private attached living space. 2.85 acres w/ fantastic road frontage on N Ctr Ave. 3 story barn w/newer steel roof. 5 garages & 8 parking spaces & space to add.

**\$825,000.**

Contact Kathy Corbett, 814-442-2643.

## **3937 Route 31**

PRIME RETAIL/RESTAURANT/OFFICE SPACE along heavily traveled Rt 31 less than 2 miles from Donegal Turnpike Exit. Highly visible, most recently a family restaurant & office space. Main level lg dining area, kitchen w/equip & restrooms. Lower level open space. Upstairs 3 bdrm living space w/kitchen DR, LR, bath & laundry. So much opportunity!

**\$525,000.**

Contact Josh Crowe, 724-454-2356.

**Uptown Works**  
**(814) 701-0762 www.uptownworks.com**

## **Meeting Rooms**

### **109 E. Main St., Somerset**

Meeting rooms in secure, professionally managed building with elevator. Great uptown location and views. Wifi access for guests. Flexible seating for 6-25. Affordable rates and monthly packages available.

## **Commercial Space Available**

### **109 E. Main St., Somerset**

Open desk office space with daily/weekly/monthly terms. All-inclusive pricing with internet, office supplies, printing, and meeting rooms. Great for start-ups and visiting or temporary workers. Secure, professionally managed building with elevator.

**Advertise your commercial property**  
**in this section for free!**

Call (814) 445-6431 for details.

**Stanczyk Properties LLC**  
**(301) 895-8064**

## **Suite A, 600 Aberdeen Drive, Somerset**

Professional one-story brick office building in Somerset Borough. 5,100 SF fully remodeled in 2017 as a physician's office. Tenants pay all utilities and insurance. Private entrances and reserved spaces in well-lit, paved parking lot. \$15 per SF plus any additional remodel  
 StanczykProperties@gmail.com

## **Suite C, 600 Aberdeen Drive, Somerset**

Professional one-story brick office building in Somerset Borough. Up to 2,850 +/- SF of shell space zoned Neighborhood Commercial. Tenants pay all utilities and insurance. Reserved spaces in well-lit, paved parking lot. \$12 per SF plus remodel

StanczykProperties@gmail.com

**RE/MAX Team, REALTORS**  
**(814) 262-7653**

## **FARANDA FARM**

### **1171 Penn Avenue, Hollsopple PA 15935** **\$499,900**

This well-known Somerset County recreational farm has been the venue for many special events and festivals since 1995 including but not limited to weddings, showers, corporate retreats, reunions, educational field trips, camping retreats, Civil War Reenactments, the annual Harvest and Garlic Festivals, and the Relay for Life. This 44.875 acre +/- farm is conveniently located to Rt 219 and offers ample parking for event participants. Charming 3-4 bedroom Farm House, Carports, Bank Barn/Barn Veranda, Restrooms/Garage/Glass House, Shower House, Pole Building, and Gazebos. Continue the traditions of this magical farm plus create new memorable events! Call today for all the details and to schedule your personal tour!

## **Vacant Lot**

### **600 Fourth Street Meyersdale, PA 15552** **\$39,900**

This level lot is .69 acres. Available utilities at lot line - gas, electric, public water and sewer. Located right across from the Meyersdale Medical Center.

### **Grandview Summit (Lots 28 and 29) Central City, PA 15926** **\$149,900**

Plenty of room to roam on nearly 20 acres of ground (comprised of 2 lots that are 10 acres each) bordering State Game Land in Shade Township. This amazing land provides everything the outdoor enthusiast could want including hunting, hiking, snowmobiling, and/or cross-country skiing. These private level, wooded lots are ready for you!

## Somerset County Chamber of Commerce

601 N. Center Avenue, Somerset, PA 15501  
(814) 445-6431 FAX (814) 443-4313  
E-mail: [info@somersetcountychamber.com](mailto:info@somersetcountychamber.com)  
Website: [www.somersetcountychamber.com](http://www.somersetcountychamber.com)

ADDRESS SERVICE REQUESTED



Keep Us Updated! Fax, Mail, or  
E-mail Address Changes Today.



STD. PRSRT.  
U.S. POSTAGE  
**PAID**  
SOMERSET, PA 15501  
PERMIT NO. 76



## Somerset County Chamber of Commerce 2022 Officers and Board of Directors

President.....	Lisa Bittner, Somerset Trust Co.
Vice President .....	
Secretary.....	David Yahner, The Eads Group, Inc.
Treasurer.....	Dennis Hutchison, PA Farm Bureau
Sarah Bittner	David Redick
Somerset Single County	CVS Health
Authority for Drug & Alcohol	
Mike Boland	Dr. David F. Reeder
RMB Realty	Berlin Brothersvalley School District
Scott Hollern	Christopher R. Robbins,
Hollern & Koontz Insurance	Past President
Agency	Somerset Trust Company
Tom Lear	Andrew G. Rush
Fairfield Inn & Suites	UPMC Somerset
Eric Mauck	Mikel Vaughn
Seven Springs Mountain Resort	AK Coal Resources, Inc.
Dr. Steve Nunez	Gerald Walker
Pennsylvania Highlands	Somerset County Commissioners
Community College	
Lindsay M. Pyle	
County of Somerset	

## Chamber Office Staff

Executive Director.....	Ron Aldom
	<a href="mailto:raldom@somersetcountychamber.com">raldom@somersetcountychamber.com</a>
Office Manager .....	Sandy Berkebile
	<a href="mailto:sandyb@somersetcountychamber.com">sandyb@somersetcountychamber.com</a>
Marketing & Communication.....	Acacia Svonavec
	<a href="mailto:asvonavec@somersetcountychamber.com">asvonavec@somersetcountychamber.com</a>
Receptionist/Clerk .....	Kayla Johnston & Christie Corbett
	<a href="mailto:info@somersetcountychamber.com">info@somersetcountychamber.com</a>

## Newsletter Schedule

Spring Edition (March - May)

February 11 – Content

February 21– Inserts

Summer Edition (June - August)

May 13 – Content

May 23– Inserts

Fall Edition (September – November)

Aug 15 Content

Aug 29 Inserts

Winter Edition (December – February 2023)

Nov 15 Content

Nov 28 Inserts

